

**Fill in these particulars.**

**Full name of Centre**

**Centre Number**

--	--

**Forename(s)**

**Surname**

--	--

**Date of Birth**

**Scottish Candidate Number**

--	--

**Title of Thematic Presentation**

Torch
-------

NOTE: The Student Record has been designed to record the work of your Thematic Presentation. It should also help to ensure that your Thematic Presentation meets the assessment requirements. Teacher/ lecturers **must** refer to "Guidance on Assessment – Thematic Presentation" (Diet 20xx/ 201xx) **before** attempting to complete this form.

Assessment Requirements

- 1 The Thematic Presentation, which is worth 30% of the total marks of the Higher Graphic Communication Course assessment, must be your own work.
- 2 The Thematic Presentation should consist of **7 to 12 pages of work**. A3, A4, or a mixture of A3 and A4 page formats may be used.
- 3 In completing the Student Record, **all** photocopied, scanned, captured, or clip art images used **must** be acknowledged. A description of any work carried out to enhanced, photocopied, scanned, captured, or clip art images must also be declared; as well as acknowledging the source of all other images.
- 4 All CAD, Illustration or computer graphic work produced by following a directed approach, such as by step-by-step guide or wizard is **not valid** for assessment purposes.
- 5 The candidate declaration must be completed for a submission to be valid.

I have read and understood the assessment requirements of the Thematic Presentation and acknowledge that this, depersonalised, work may be used as exemplification for learning and teaching purposes.

Signature of Candidate \_\_\_\_\_

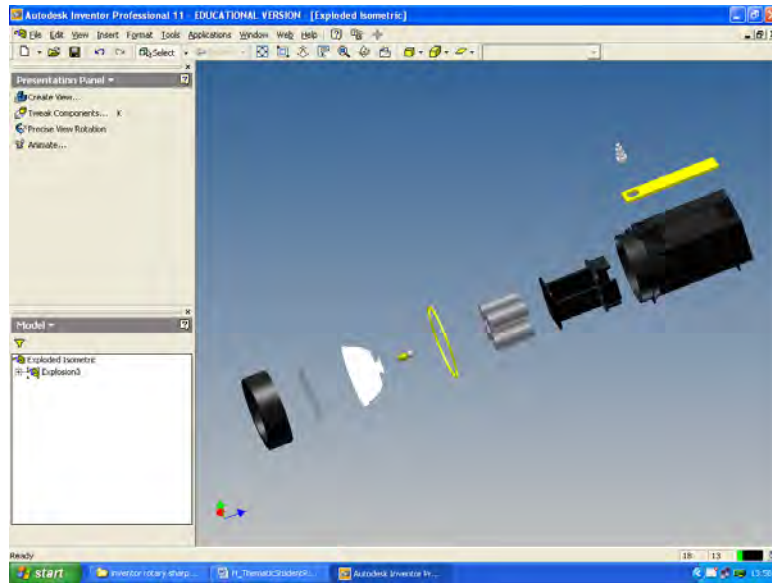
Date \_\_\_\_\_

## Graphic Communication Higher – Thematic Presentation

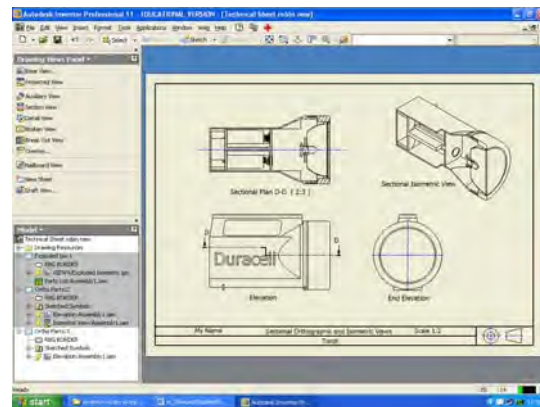
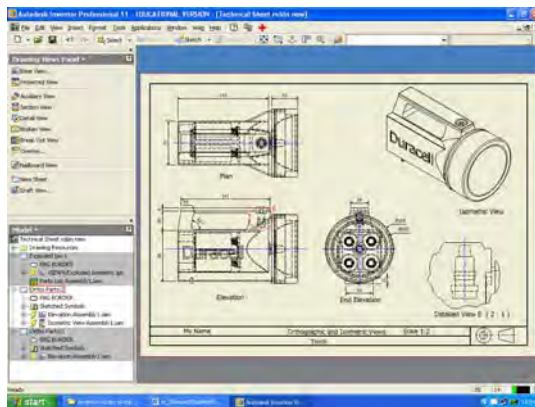
The Student Record is used by candidates to provide a detailed description of how each item was produced

### Section 2. Computer-Aided Drawings Orthographic Drawing

Item(s)/ Page(s) \_\_\_\_\_



I created the parts for my torch in Inventor using mainly the extrusion and revolve commands. I then assembled the parts to create my torch. Using the assembly, I created the orthographic sheets using a BSI template.

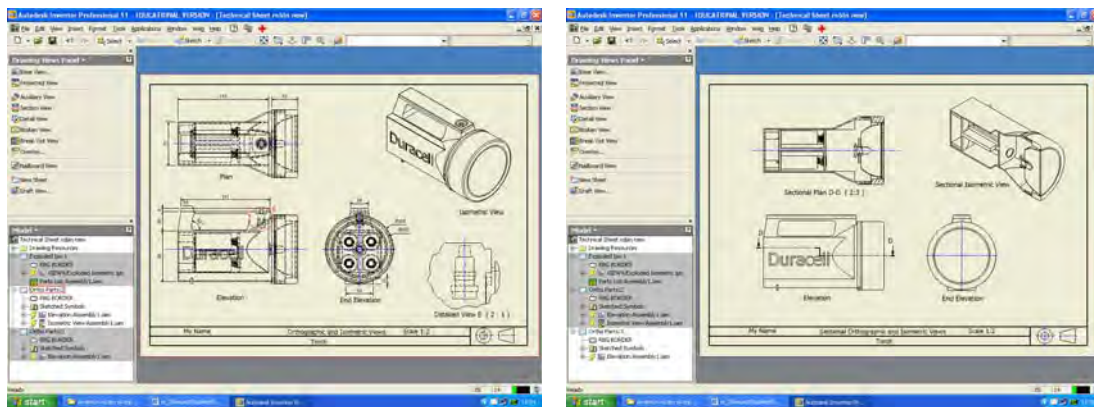


## Graphic Communication Higher – Thematic Presentation

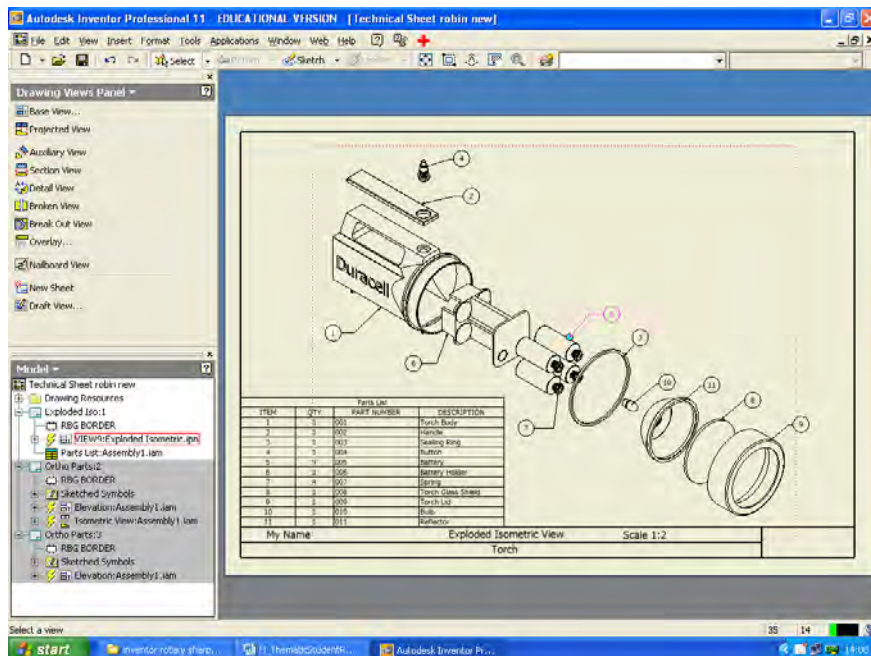
The Student Record is used by candidates to provide a detailed description of how each item was produced

### Section 2. Computer-Aided Drawing Pictorial Line Drawing

Item(s)/ Page(s) \_\_\_\_\_



On the orthographic sheets I added isometric and sectional isometric views as shown.



I then put the isometric into the Presenter part of Inventor and exploded the parts. This was used to create an Exploded Isometric view

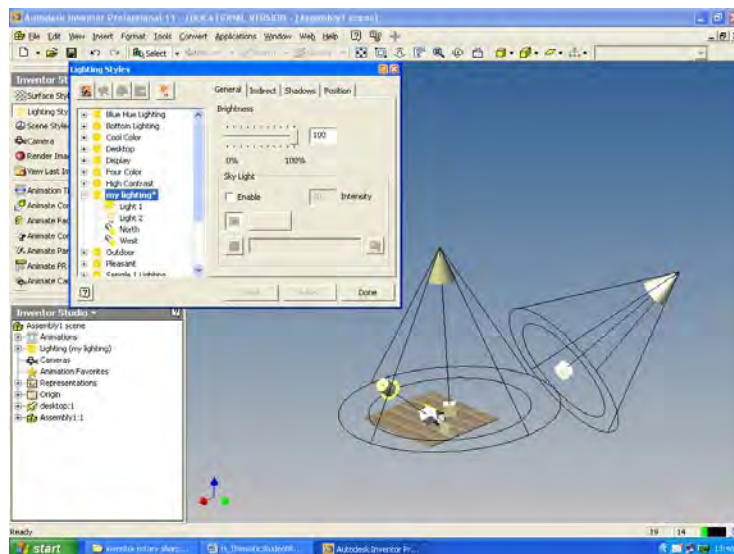
## Graphic Communication Higher – Thematic Presentation

The Student Record is used by candidates to provide a detailed description of how each item was produced

### Section 3. Computer-Aided Illustration & Presentation Illustration

Item(s)/ Page(s) \_\_\_\_\_

I created a rectangular part as a base for my torch and made the wood texture shiny. I then created my own lighting style in Inventor Studio as shown below and then rendered it

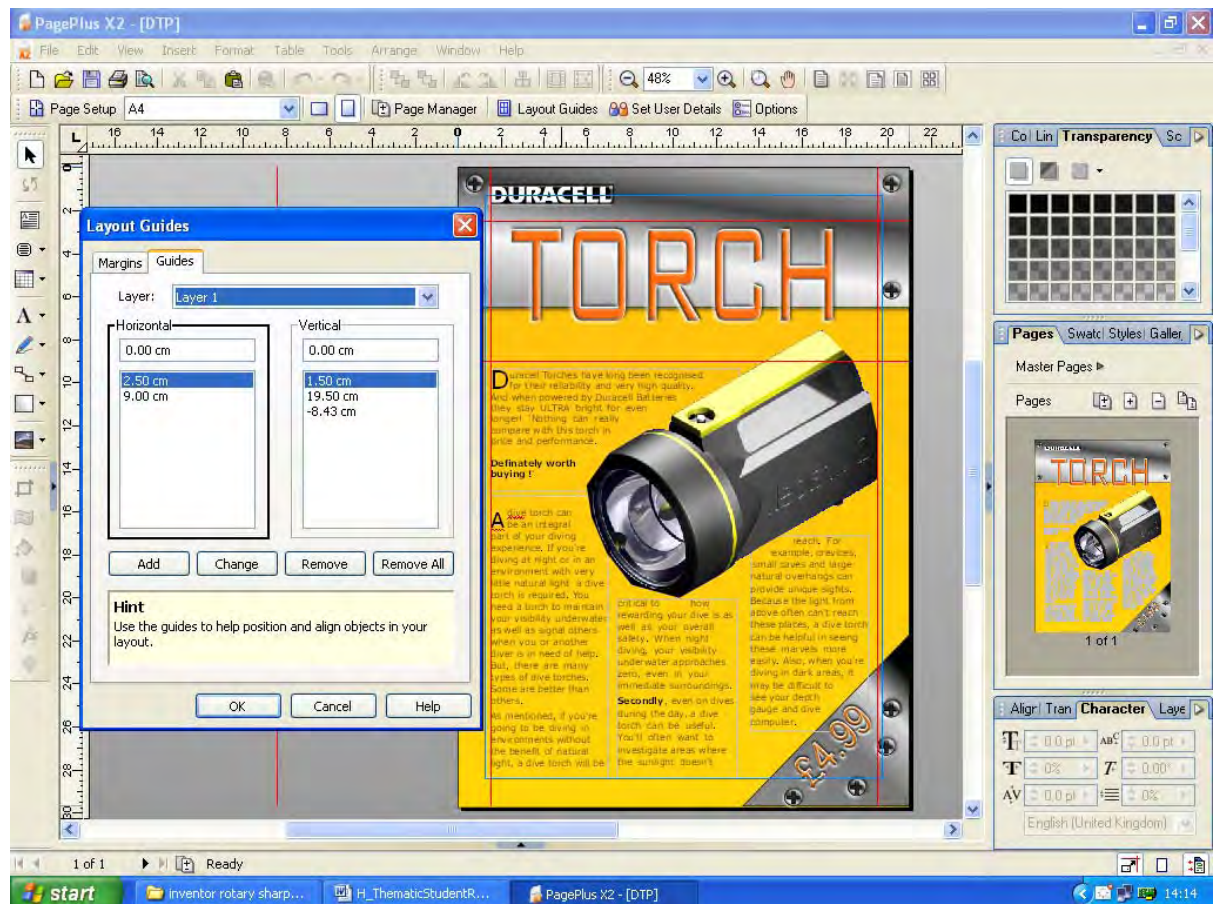


## Graphic Communication Higher – Thematic Presentation

The Student Record is used by candidates to provide a detailed description of how each item was produced

### Section 3. Computer-Aided Illustration & Presentation Desktop Publishing

Item(s)/ Page(s) \_\_\_\_\_



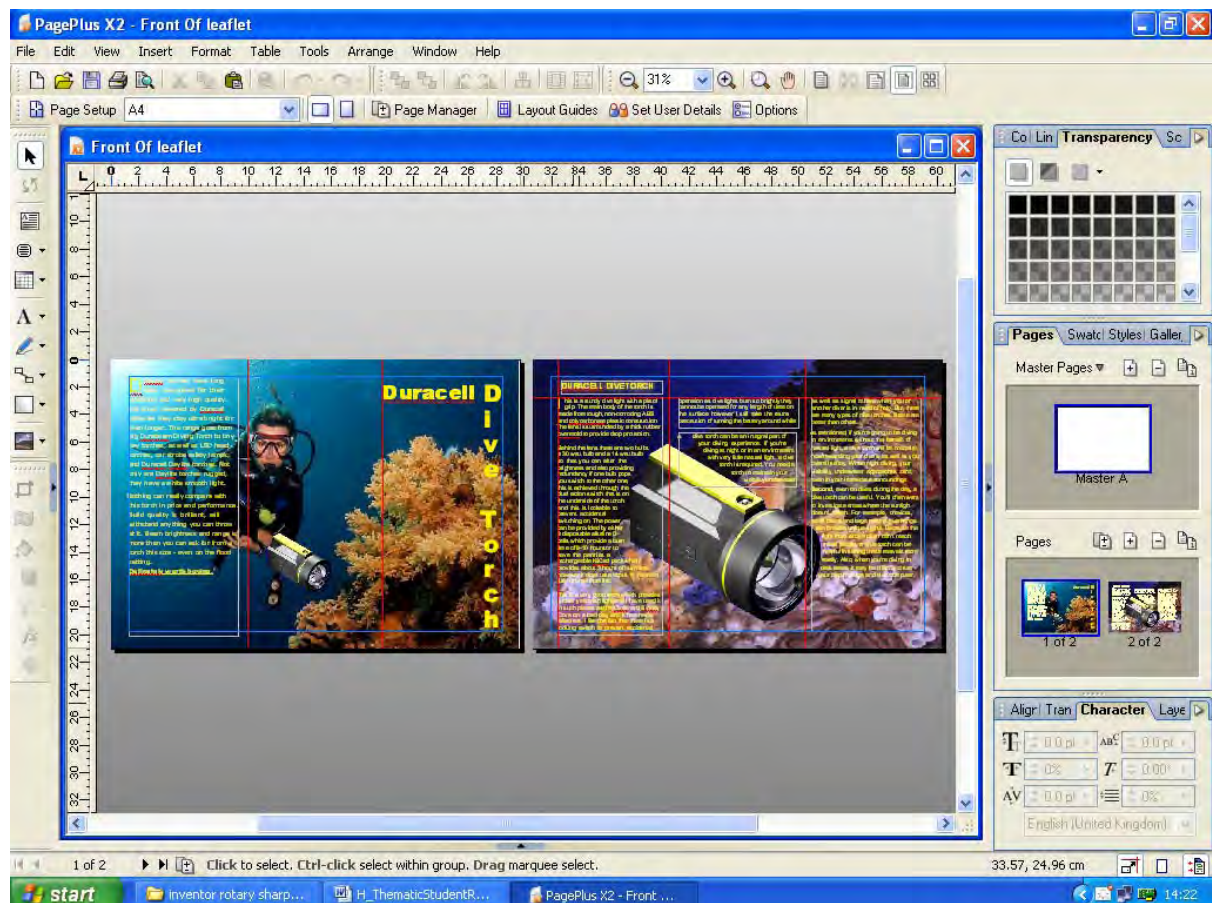
Using Pageplus, I set up guidelines for margins and 3 columns of text. I then placed the image of my torch into the page and set it to word wrap. After creating 3 text frames and linking them together, I imported the text into my page. Drop caps and sub headings were added. The two metallic plates and screws were then created. Finally the heading and background was added.

## Graphic Communication Higher – Thematic Presentation

The Student Record is used by candidates to provide a detailed description of how each item was produced

### Section 3. Computer-Aided Illustration & Presentation Promotional Graphics

Item(s)/ Page(s) \_\_\_\_\_



For my leaflet I used Pageplus. First I created guidelines for the folds and the text panels. I then imported images for the backgrounds. My torch was then imported twice. I scaled one down and placed it on the divers hand. The other was centered across the folds in the inside page. I then created text frames and linked them together. My text was then inserted into the frames. Finally the titles and headings were added.

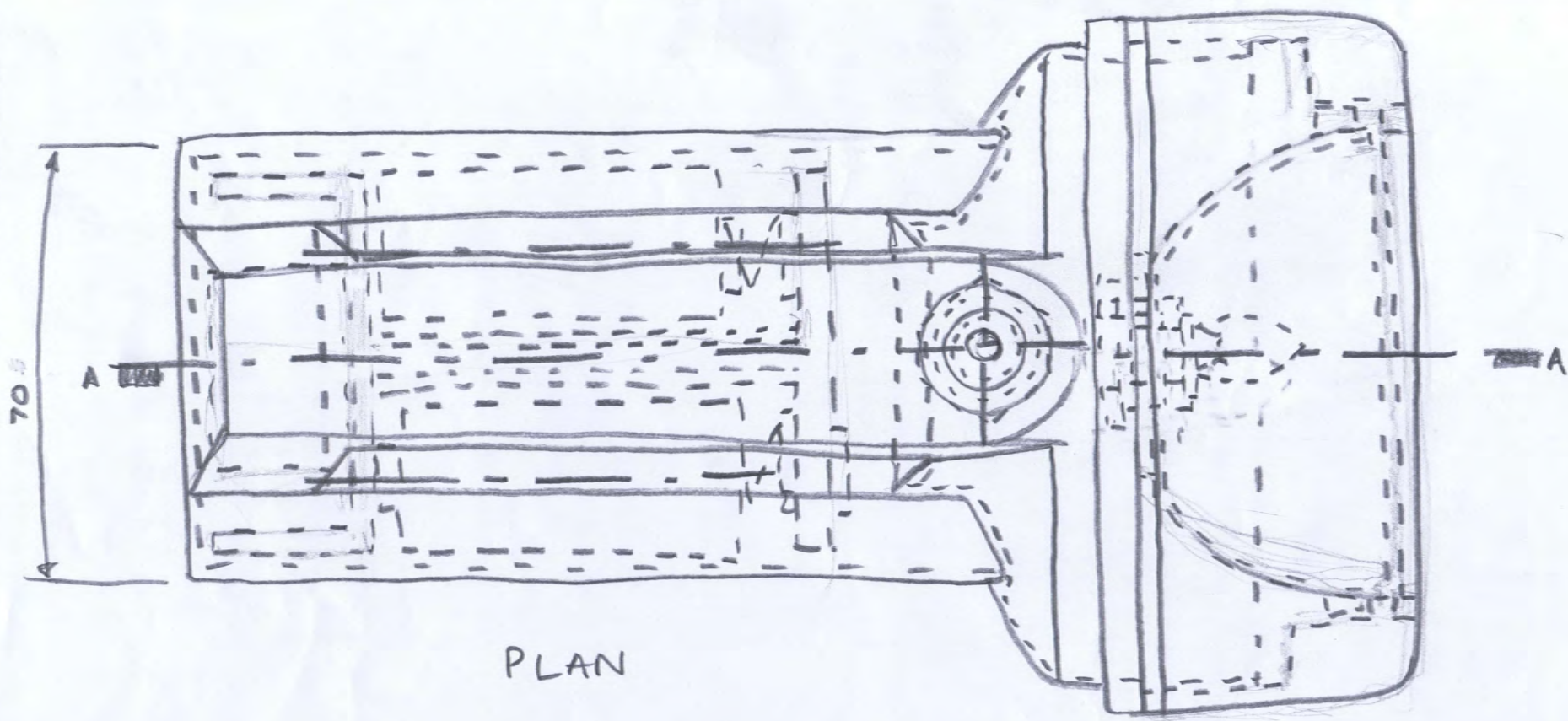


## Graphic Communication Higher Teacher/ Lecturer Assessment of Thematic Presentation

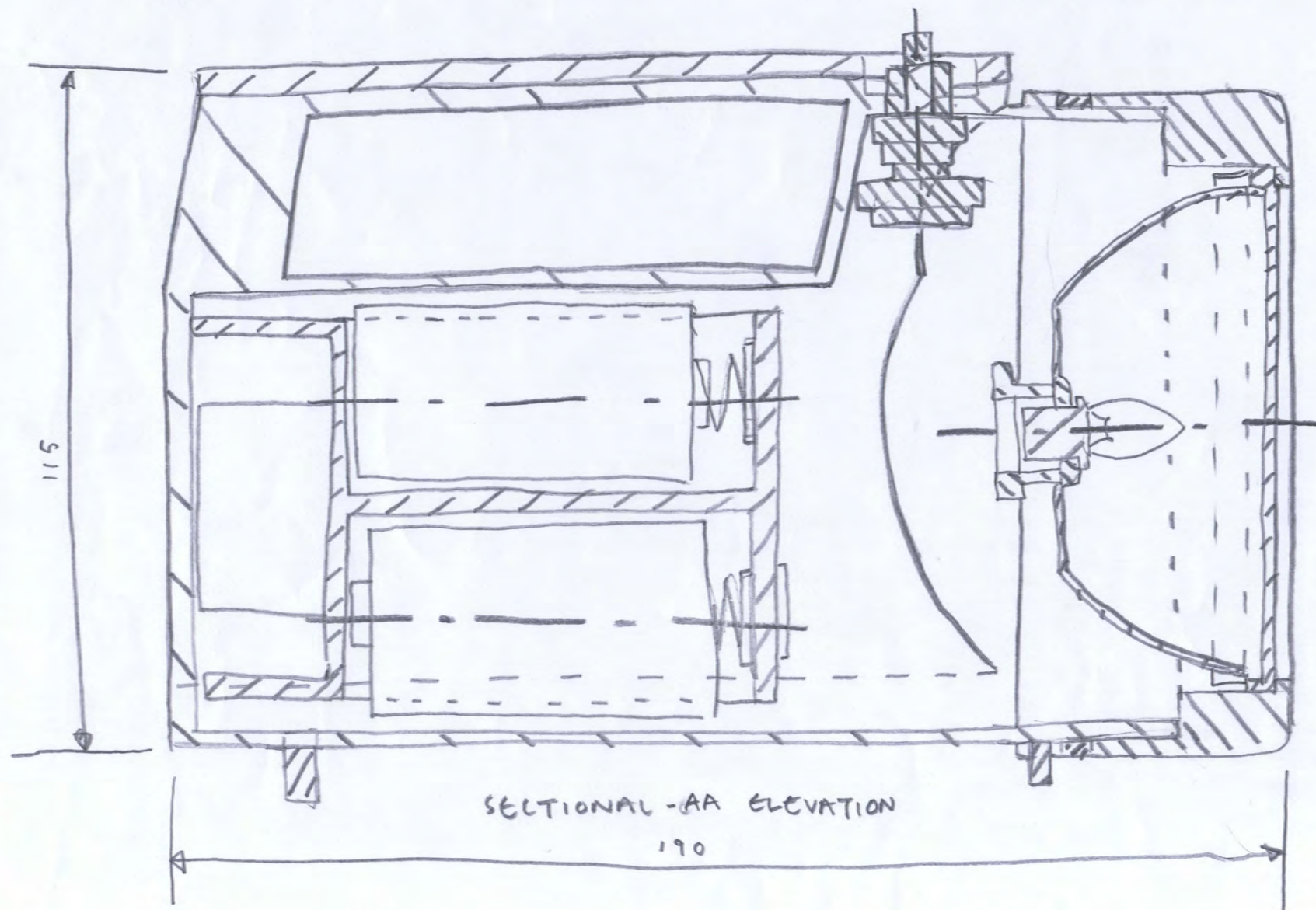
Teacher/ lecturers must refer to “Guidance on Assessment – Thematic Presentation” (Diet 2010/ 2011) before attempting to complete this form.

Candidate \_\_\_\_\_

Item No.(s)	Assessment Criteria	Max. Marks	Mark Awarded	Official Use
	<b>Section 1. Manual Graphics</b>			
	(a) Freehand Sketching (i) related orthographic	4	4	
	(ii) pictorial	4	3	
	(b) Rendered Illustrations (i) rendering	4	3	
	(c) Desktop Planning (i) annotated sketches	4	4	
	(ii) drawn visual	4	4	
	<b>Section 2. Computer-Aided Drawings</b>			
	Computer-Aided Drawings (i) orthographic drawing	6	6	
	(ii) annotation	2	2	
	(iii) pictorial line drawing	6	6	
	(iv) technical detail	6	4	
	<b>Section 3. Computer-Aided Illustration &amp; Presentation</b>			
	(a) Using Illustration Package (i) rendering	6	6	
	(b) Using DTP Package (i) use text/ layout, etc	6	5	
	(ii) technical quality	4	3	
	(c) Promotional Graphics (i) visual impact, etc	4	6	
<b>Total</b>	<b>Marks</b>	<b>60</b>	<b>56</b>	

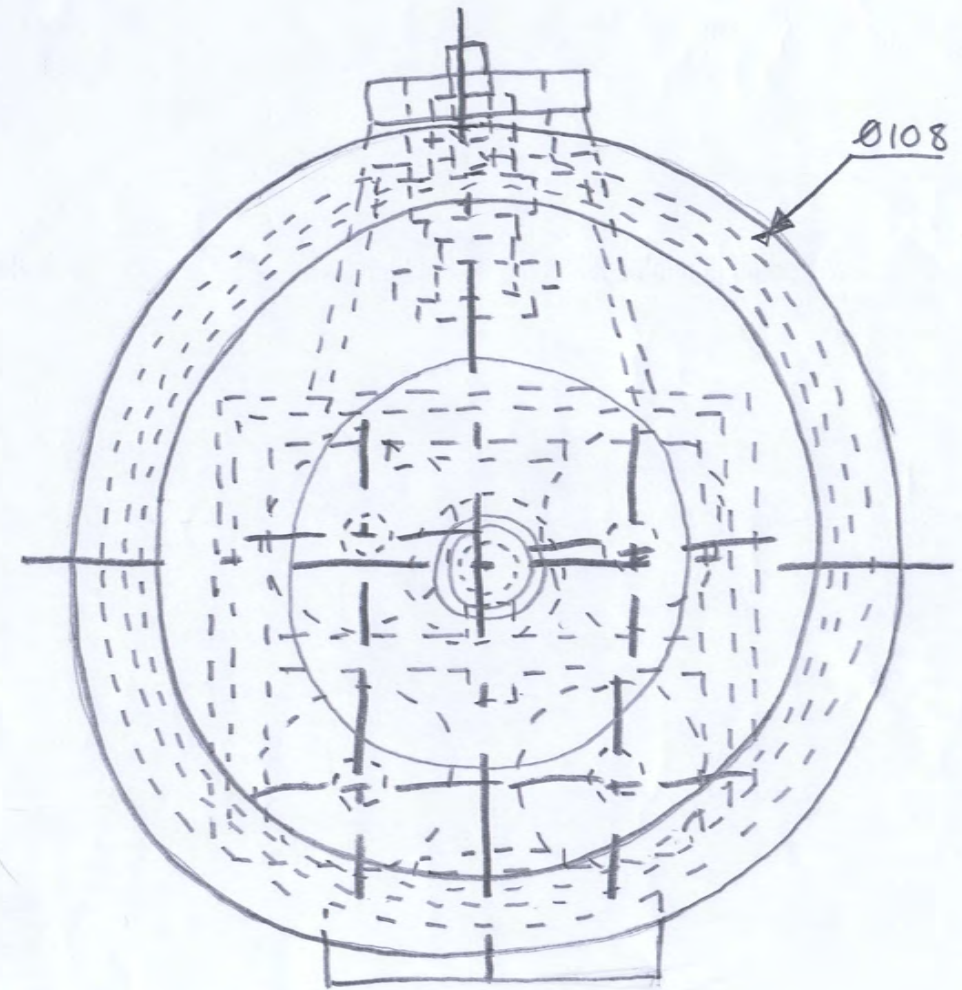


PLAN



SECTIONAL-AA ELEVATION

190

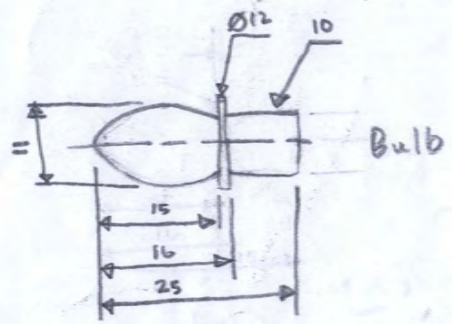


END ELEVATION

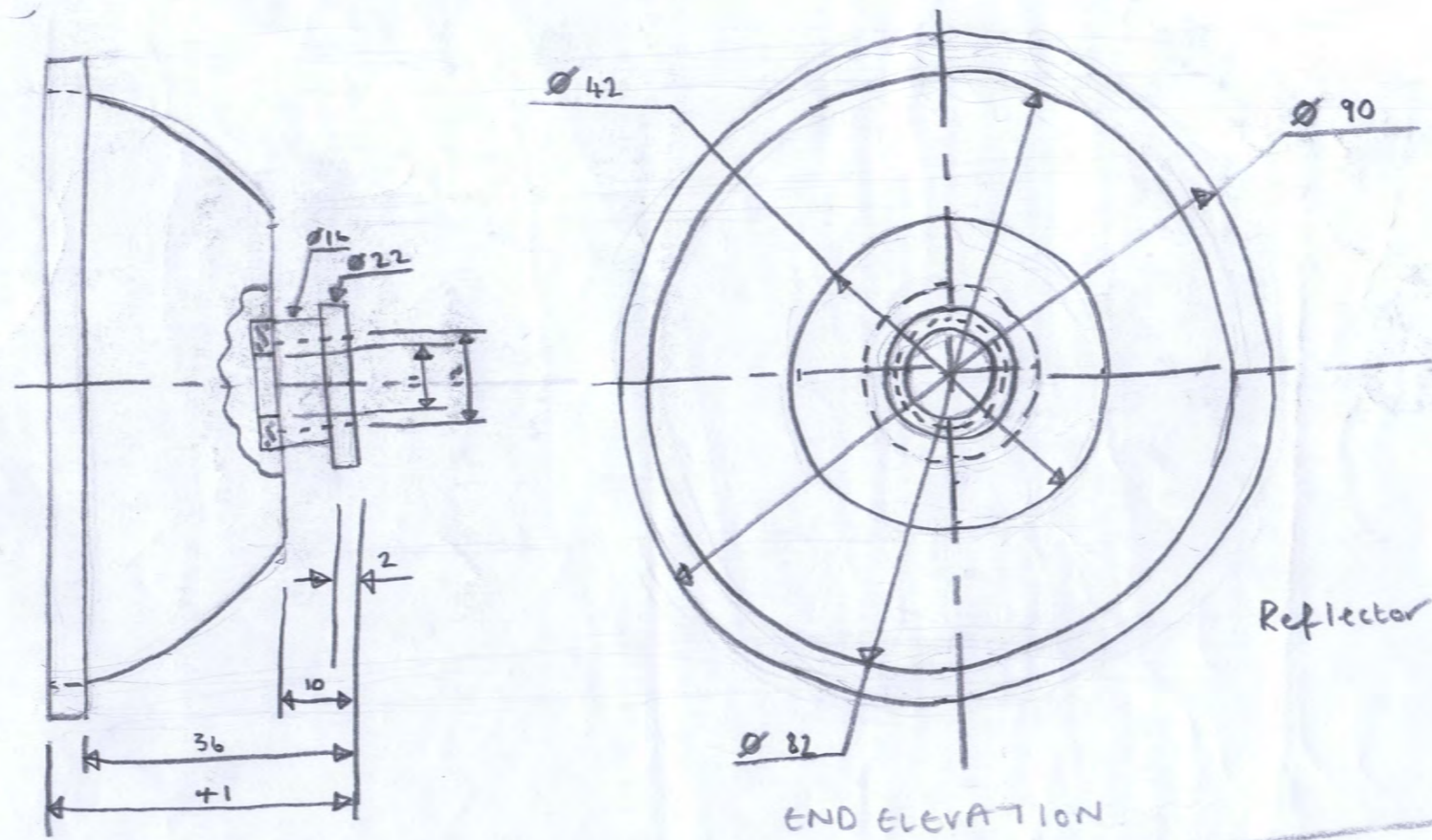
ORTHOGRAPHIC VIEW  
ASSEMBLY TORCH







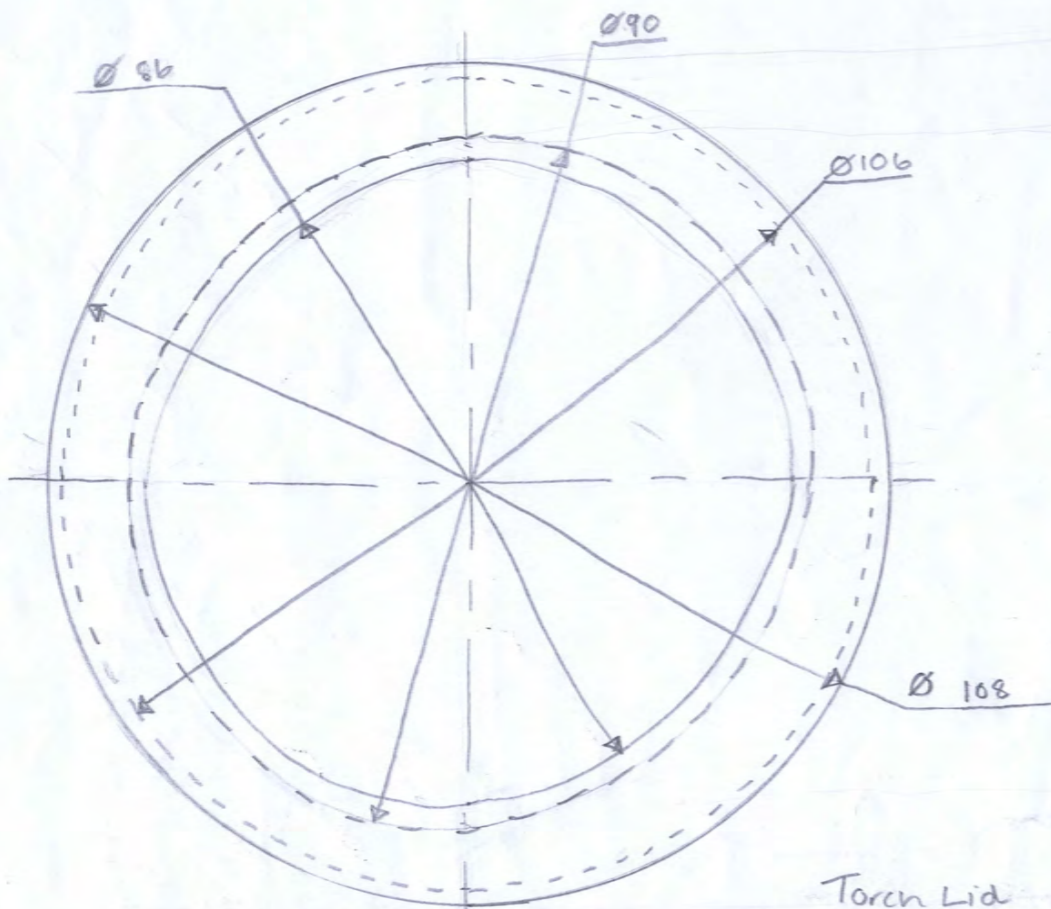
ELEVATION



ELEVATION

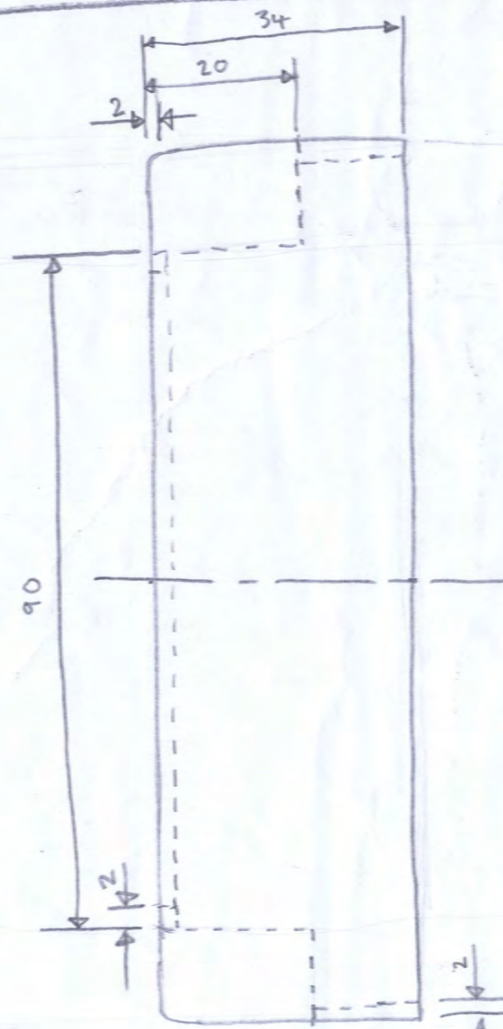
END ELEVATION

Reflector

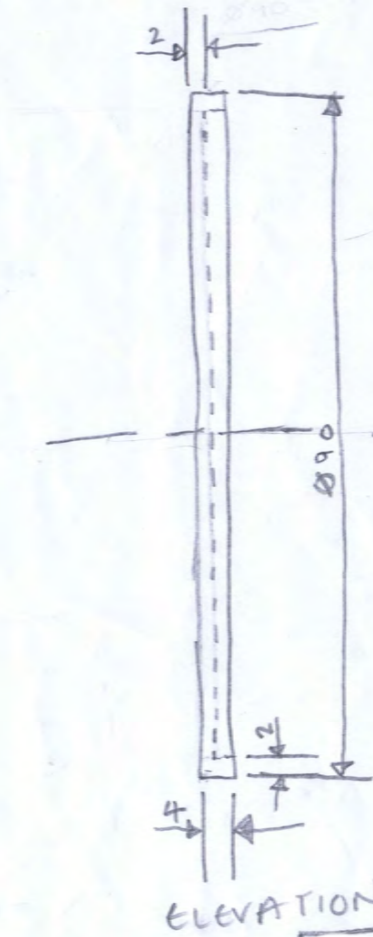


ELEVATION

Torch Lid

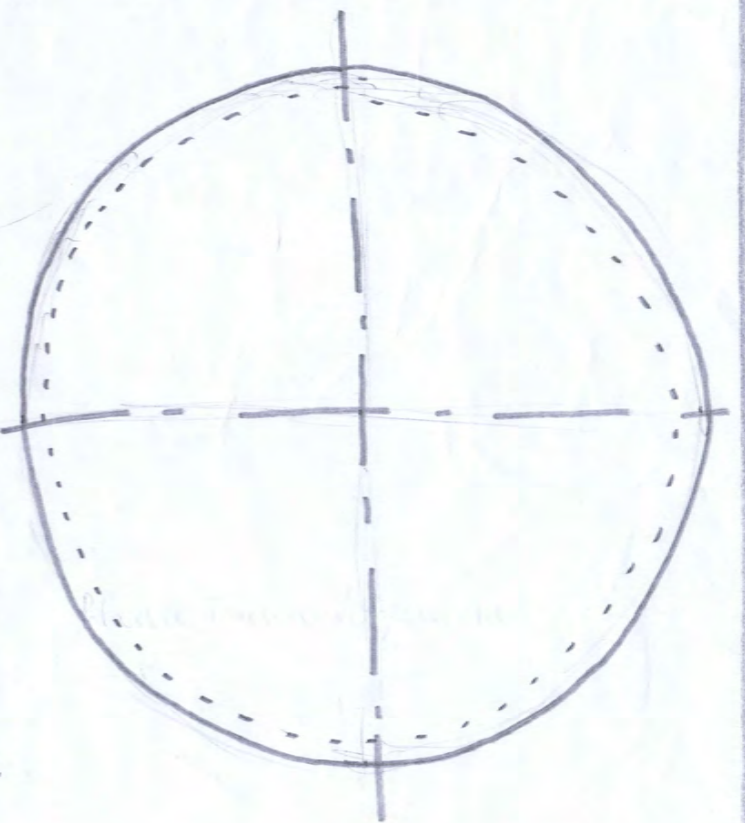


END ELEVATION



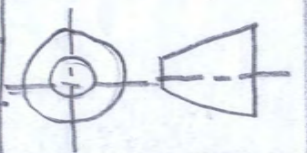
ELEVATION

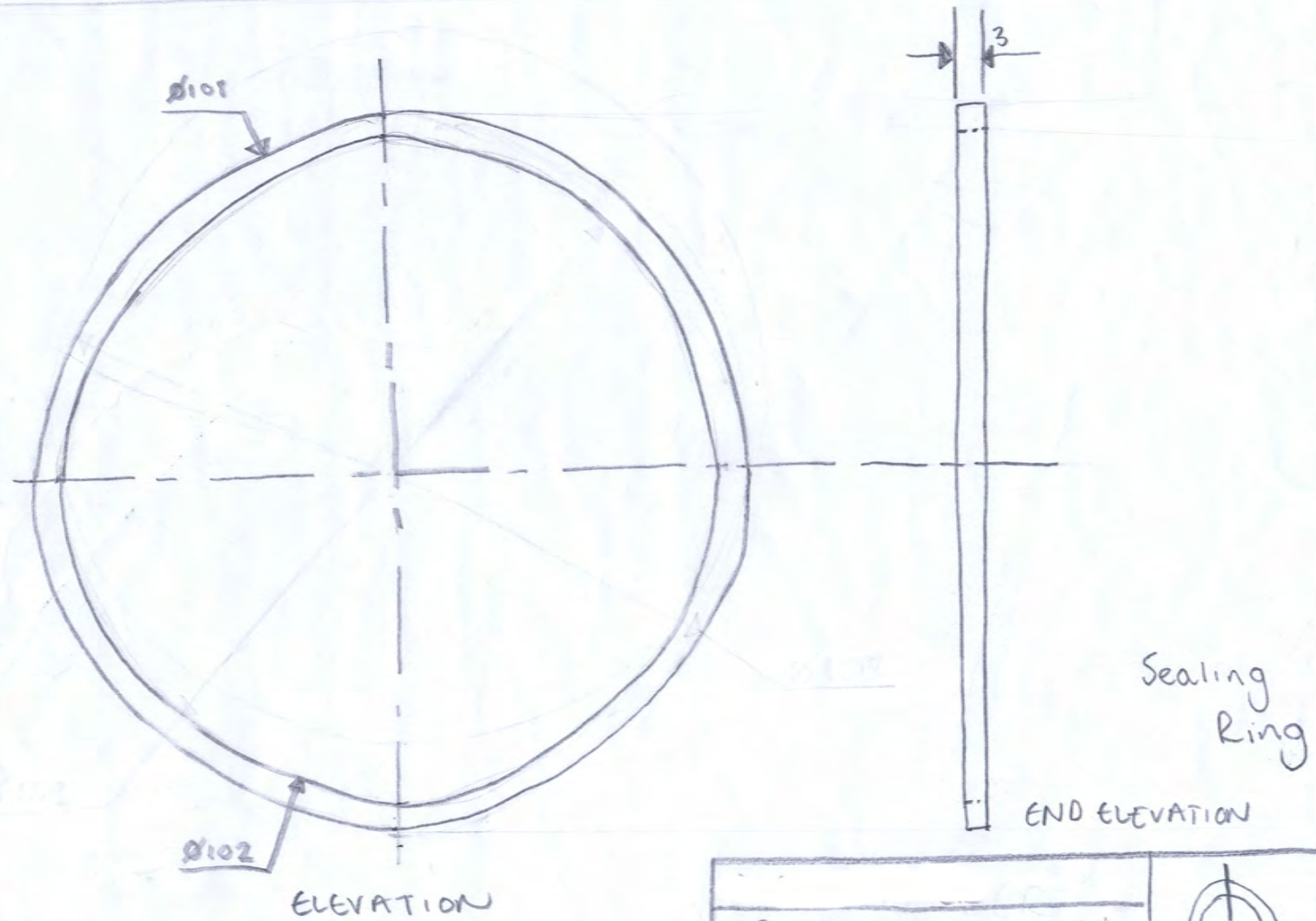
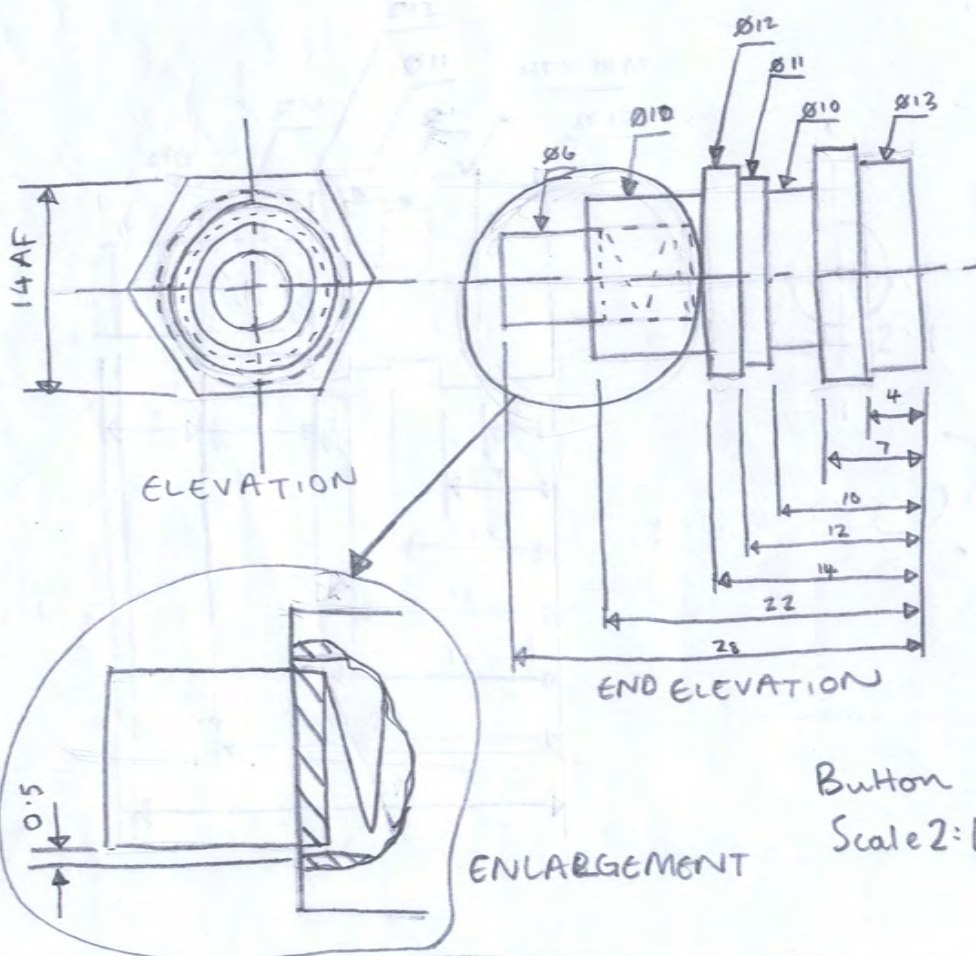
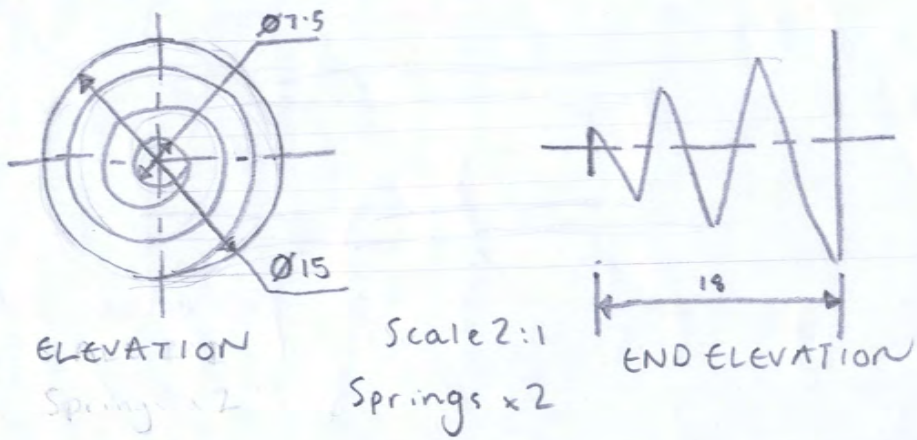
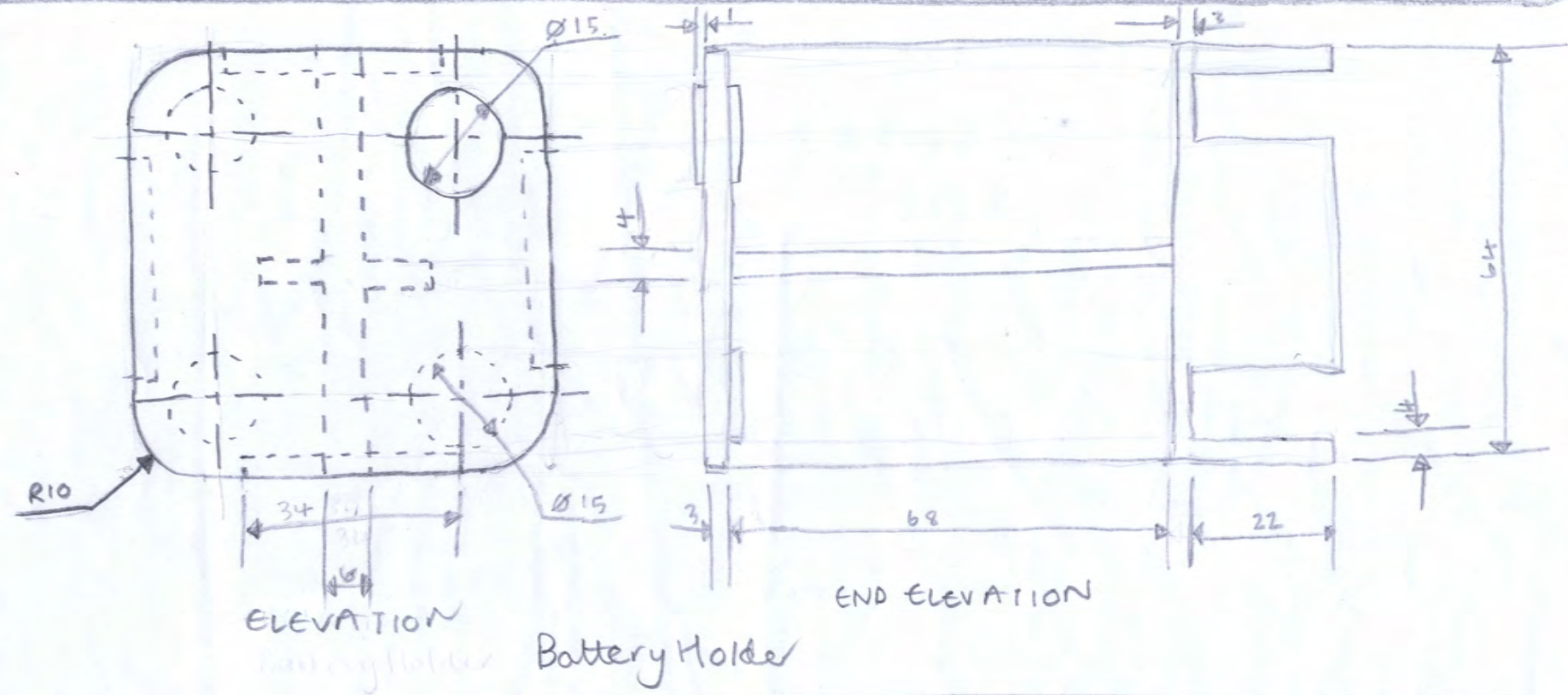
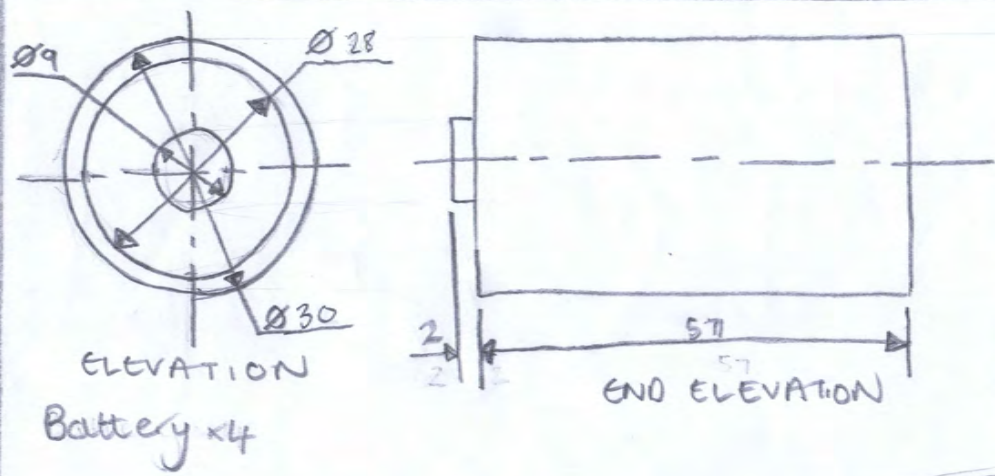
Torch shield Glass



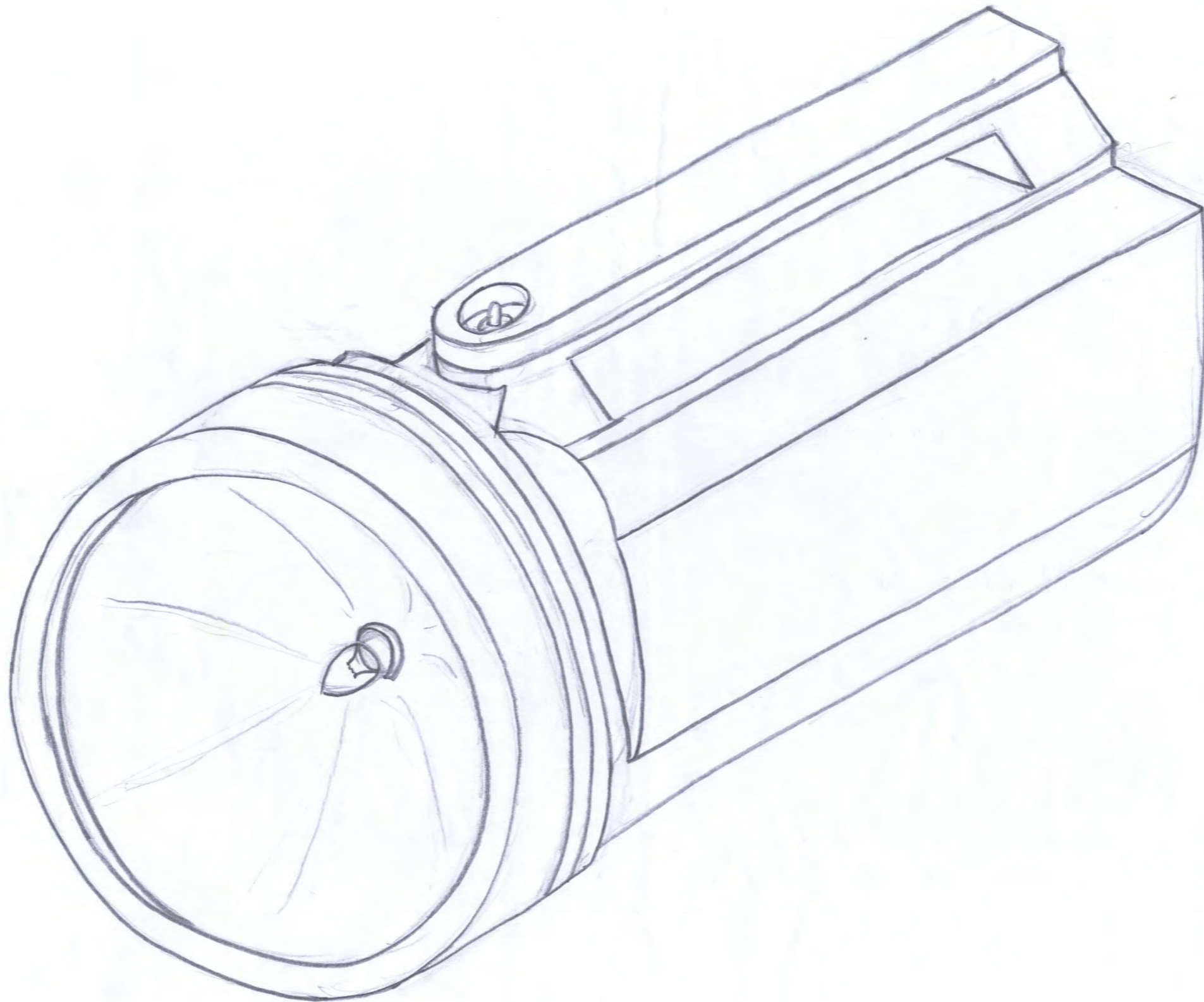
ENDELEVATION


ORTHOGRAPHIC VIEW  
TORCH PARTS

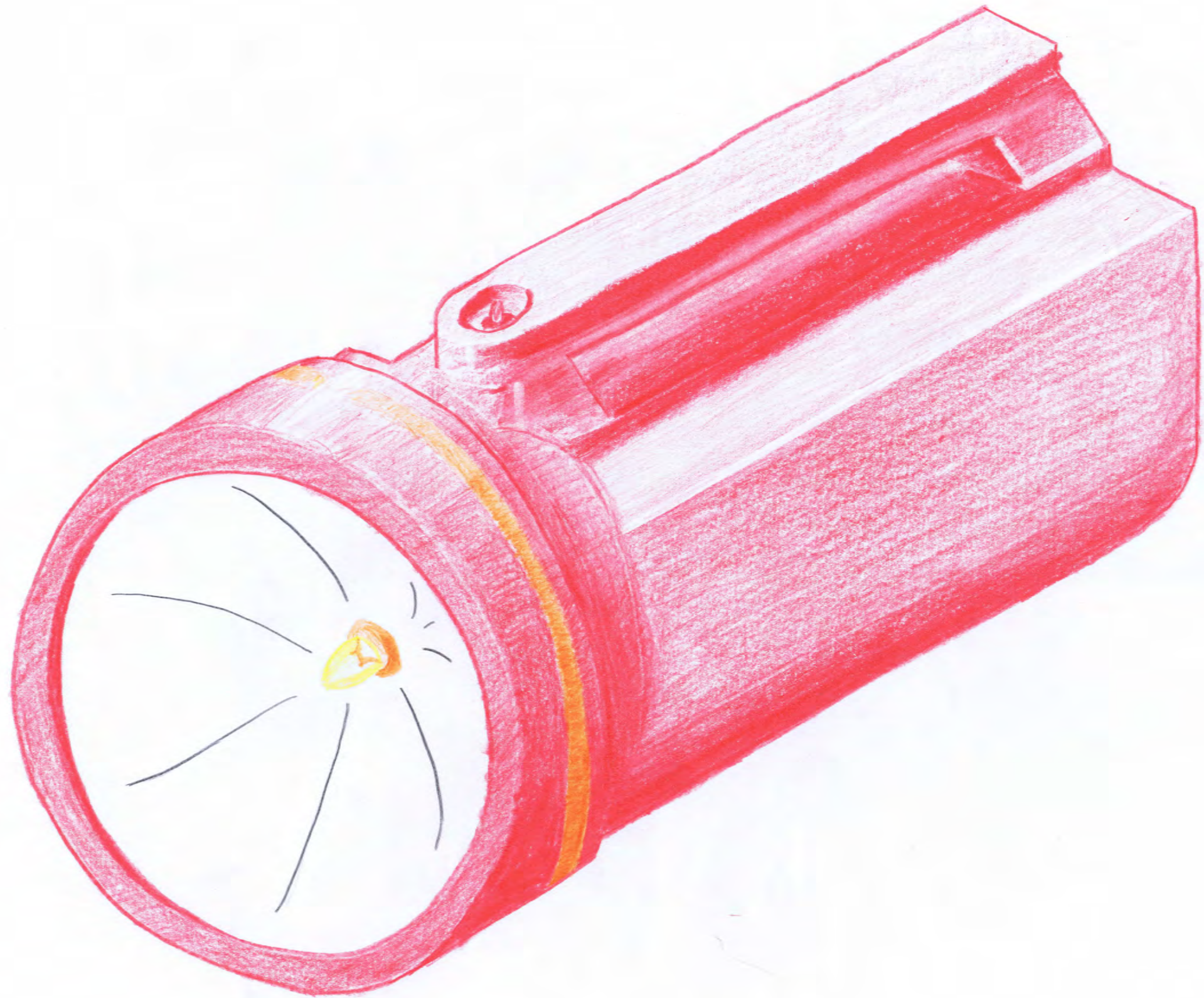




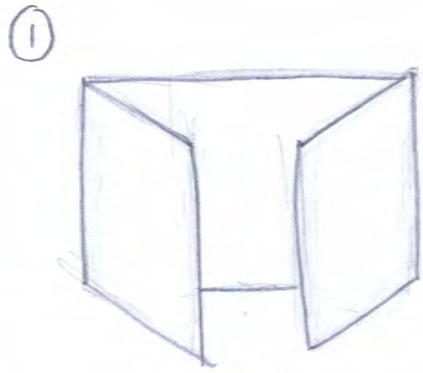
ORTHOGRAPHIC VIEW	
TORCH PARTS	



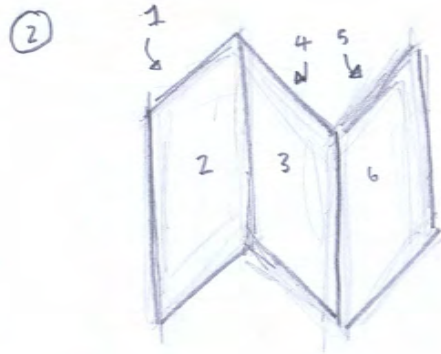
ISOMETRIC VIEW	
TORCH	



RENDERED VIEW	
TORCH	

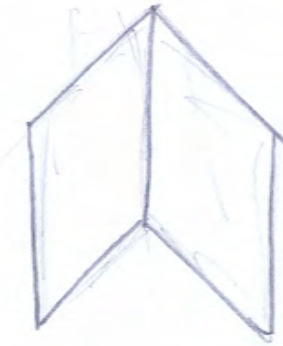


Double Fold  
Opens like doors.

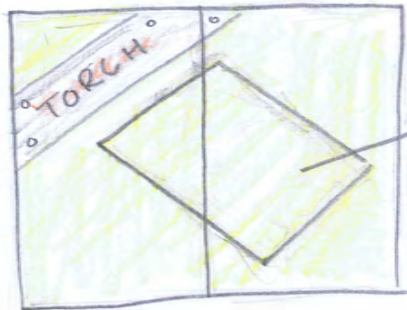


Tri-Fold

3



Single Fold



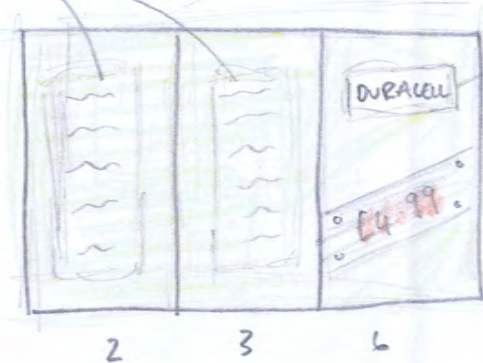
graphic of torch

FRONT



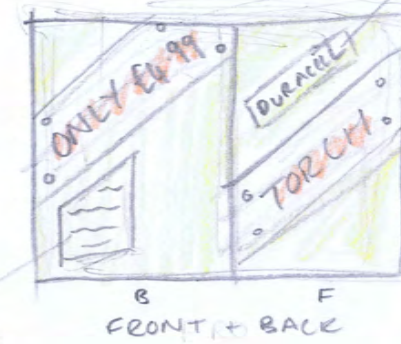
BACK

text boxes



Duracell logo

2 3 6

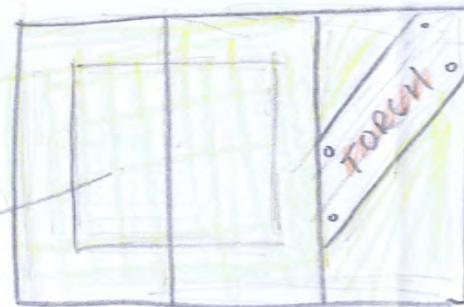


Duracell logo

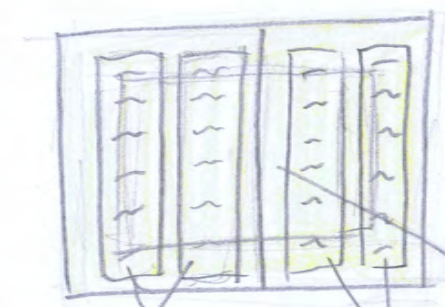
text box

B FRONT + BACK F

graphic of torch



5 4 1

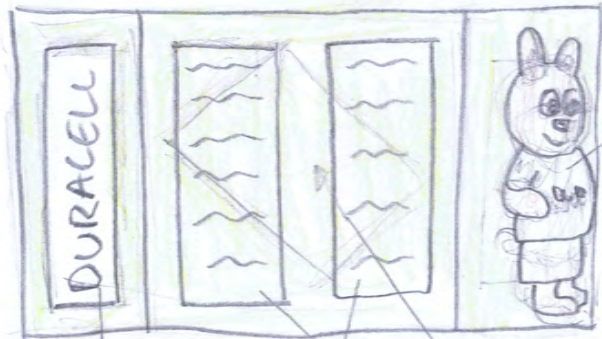


text boxes

INSIDE

text boxes

graphic of torch behind text



graphic of Duracell bunny

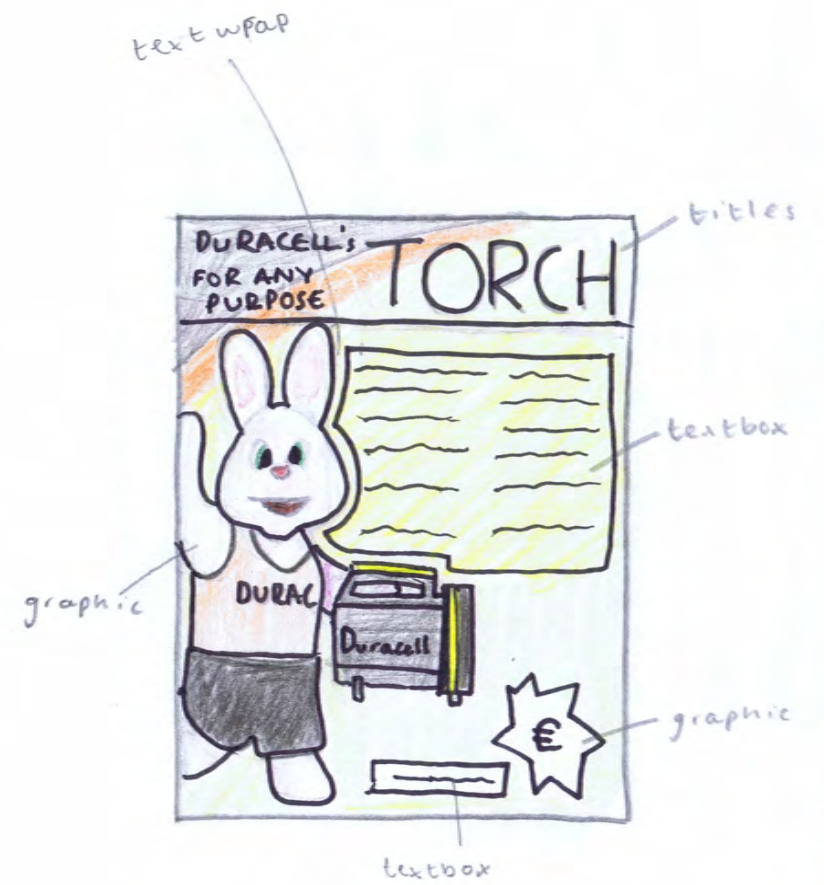
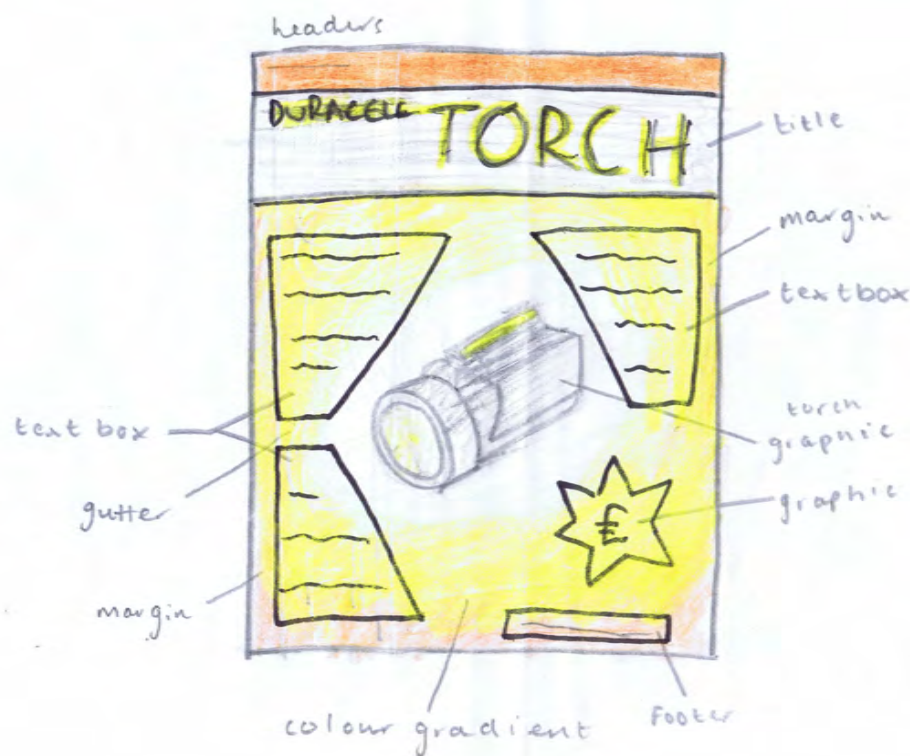
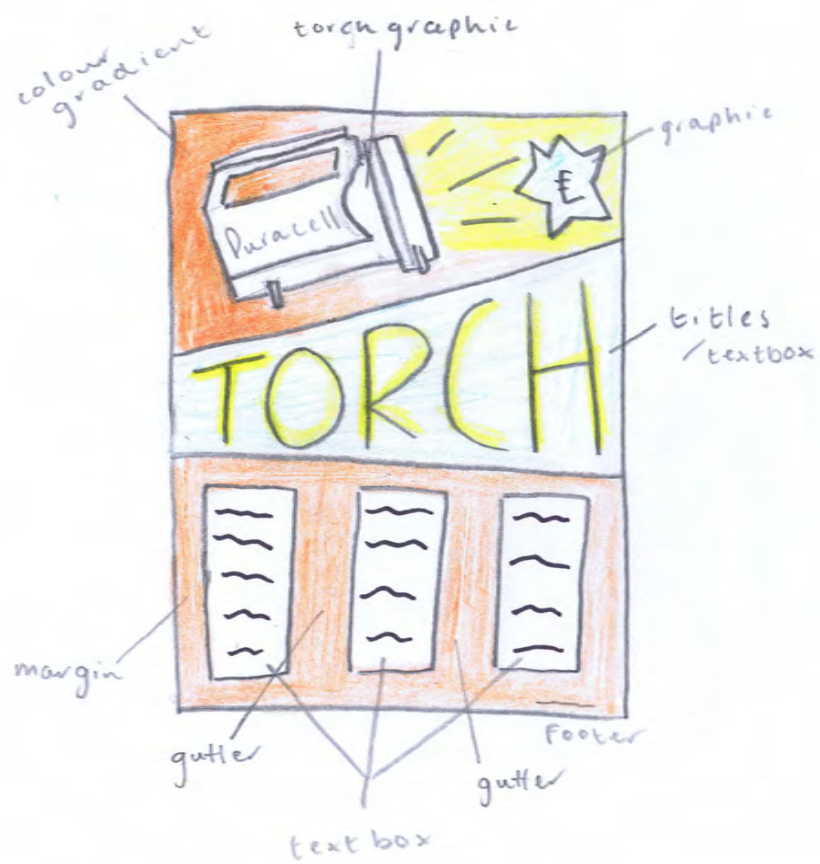
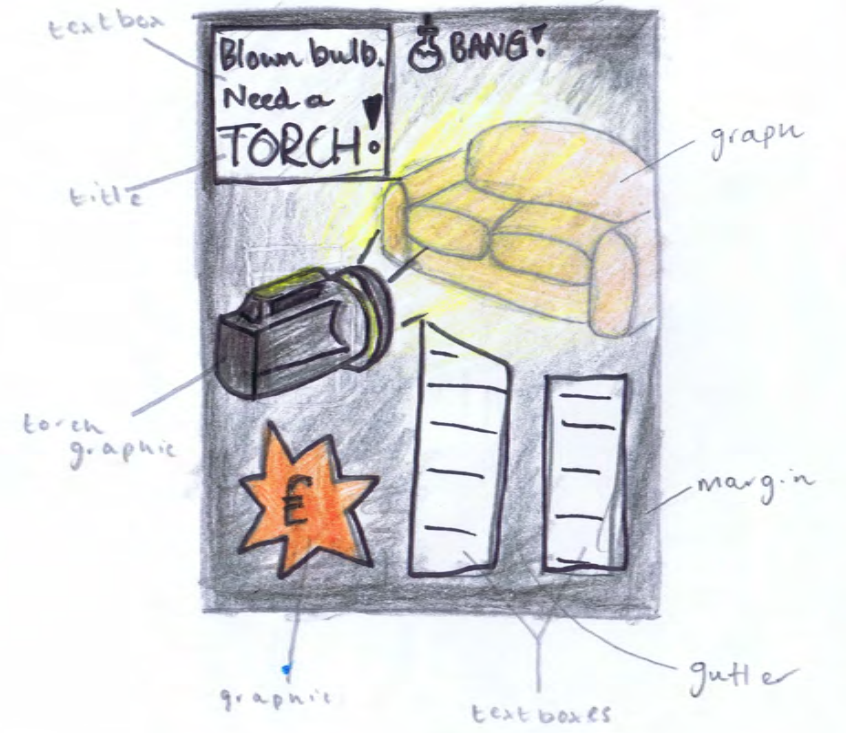
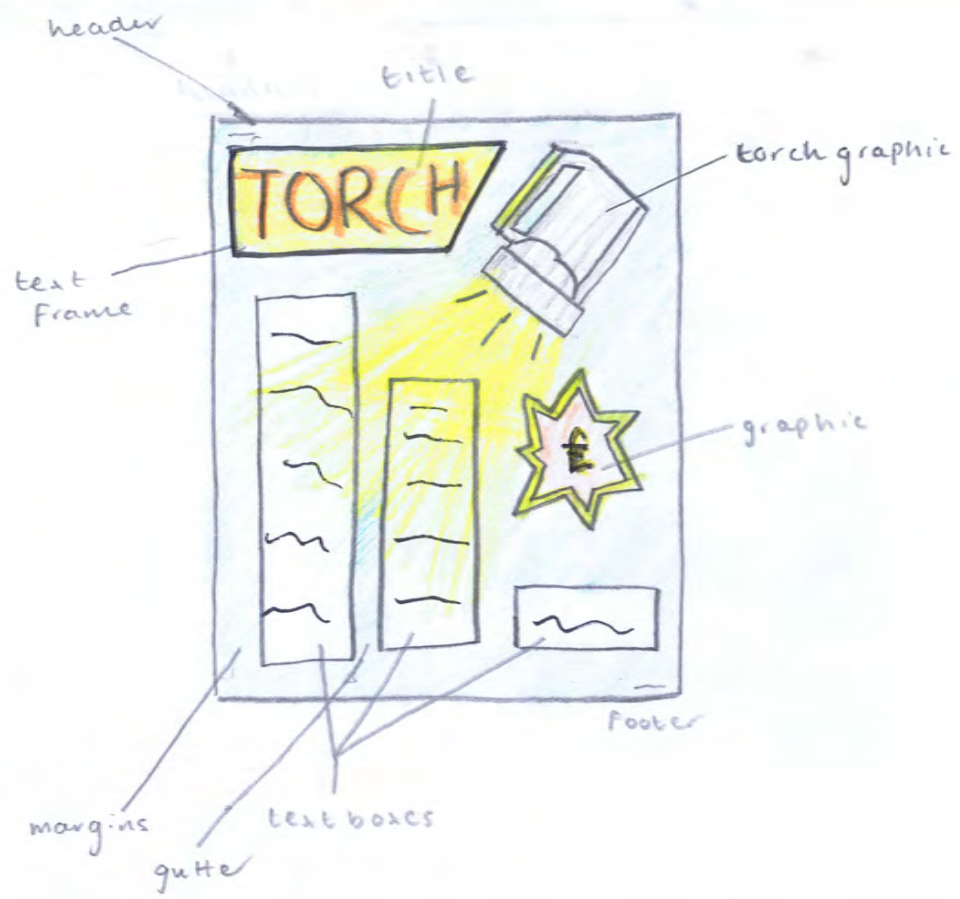
Duracell logo

INSIDE

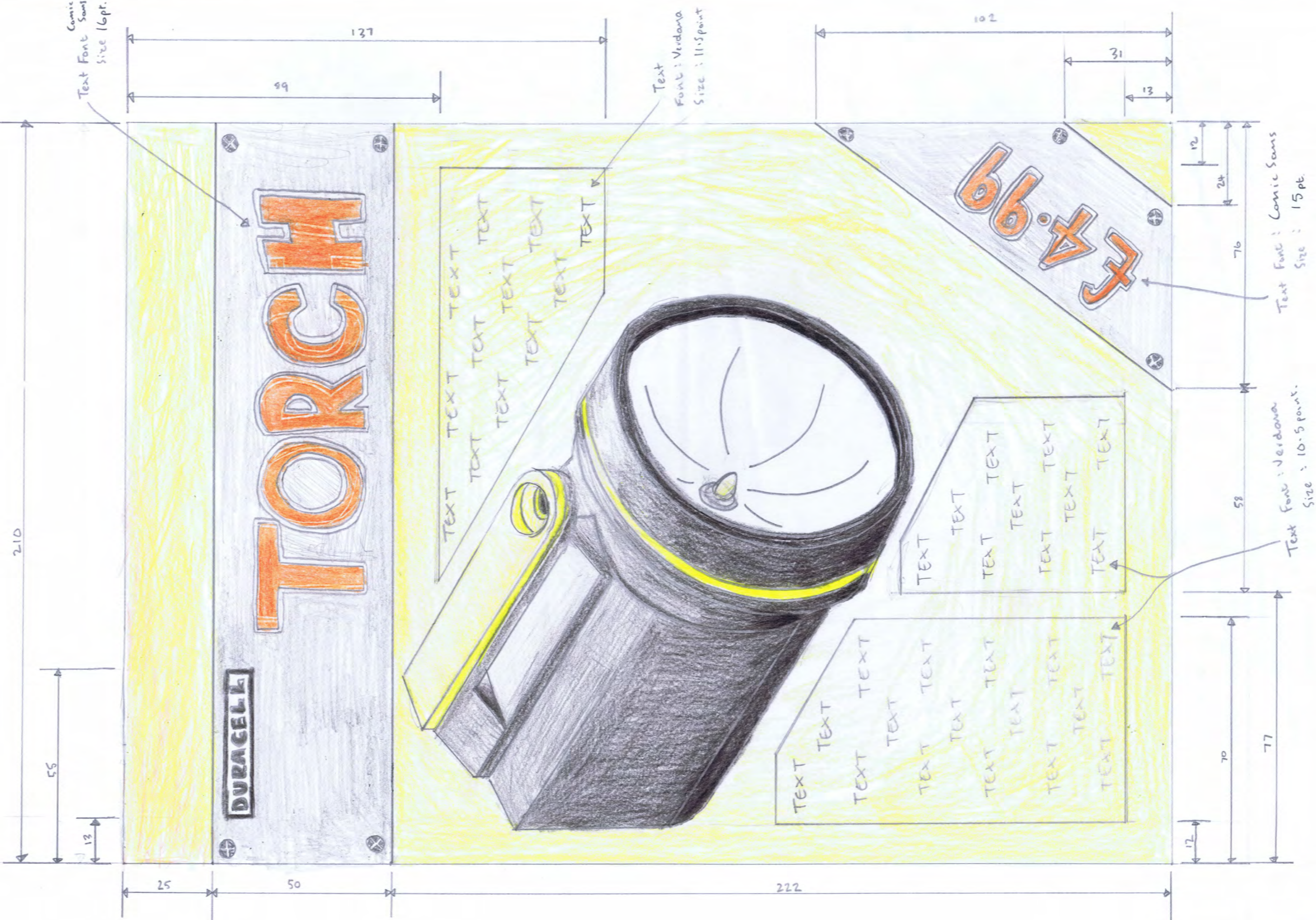
text boxes

graphic of torch behind text

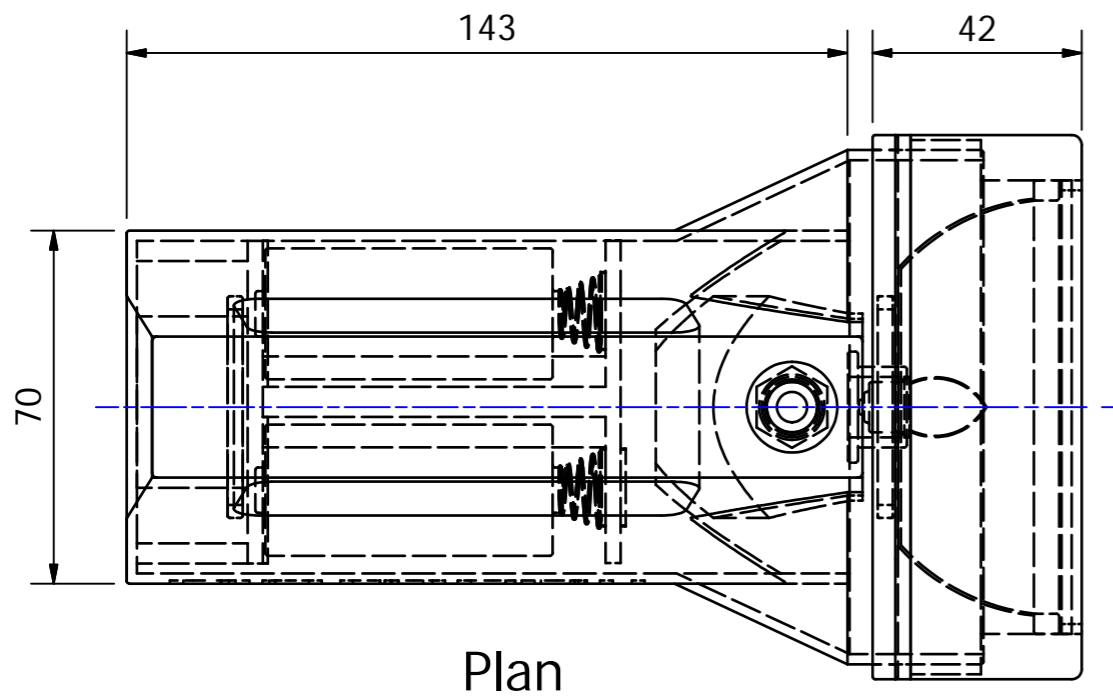
THUMBNAIL SKETCHES	
TORCH LEAFLET	



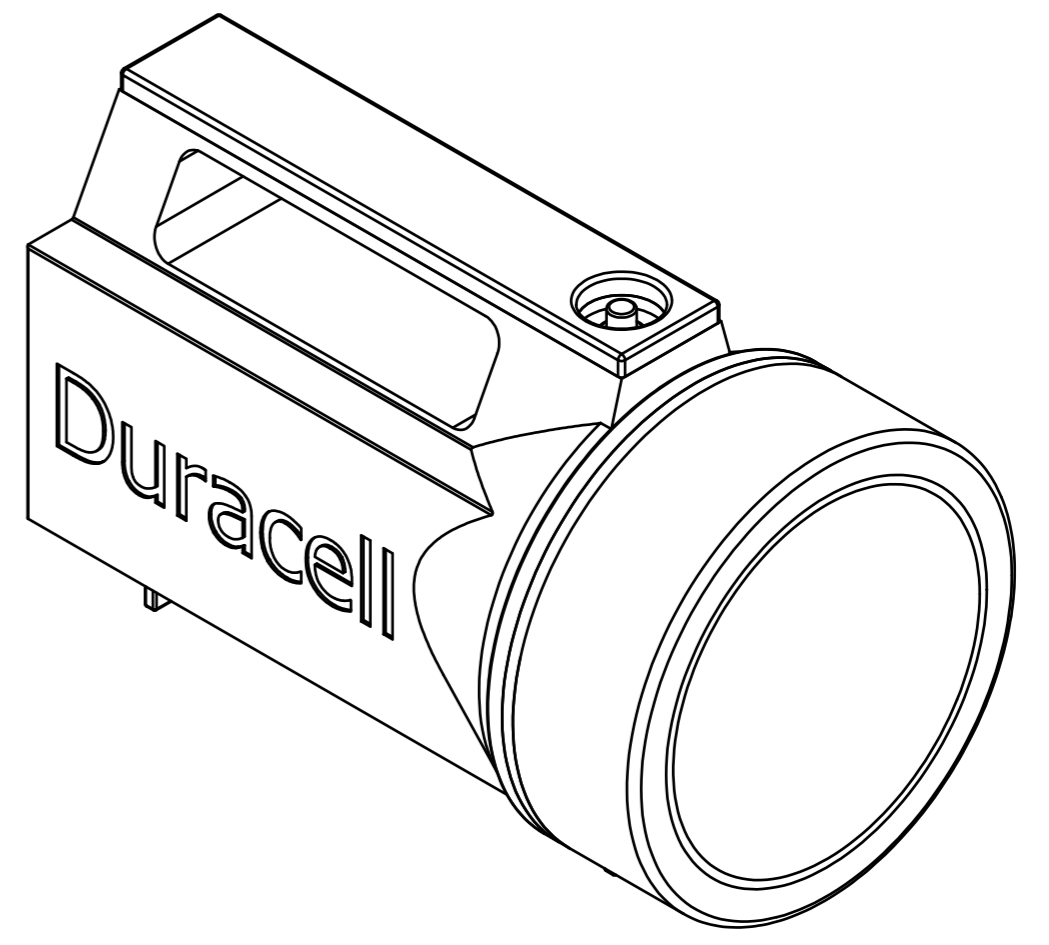
THUMBNAIL SKETCHES  
POSTER



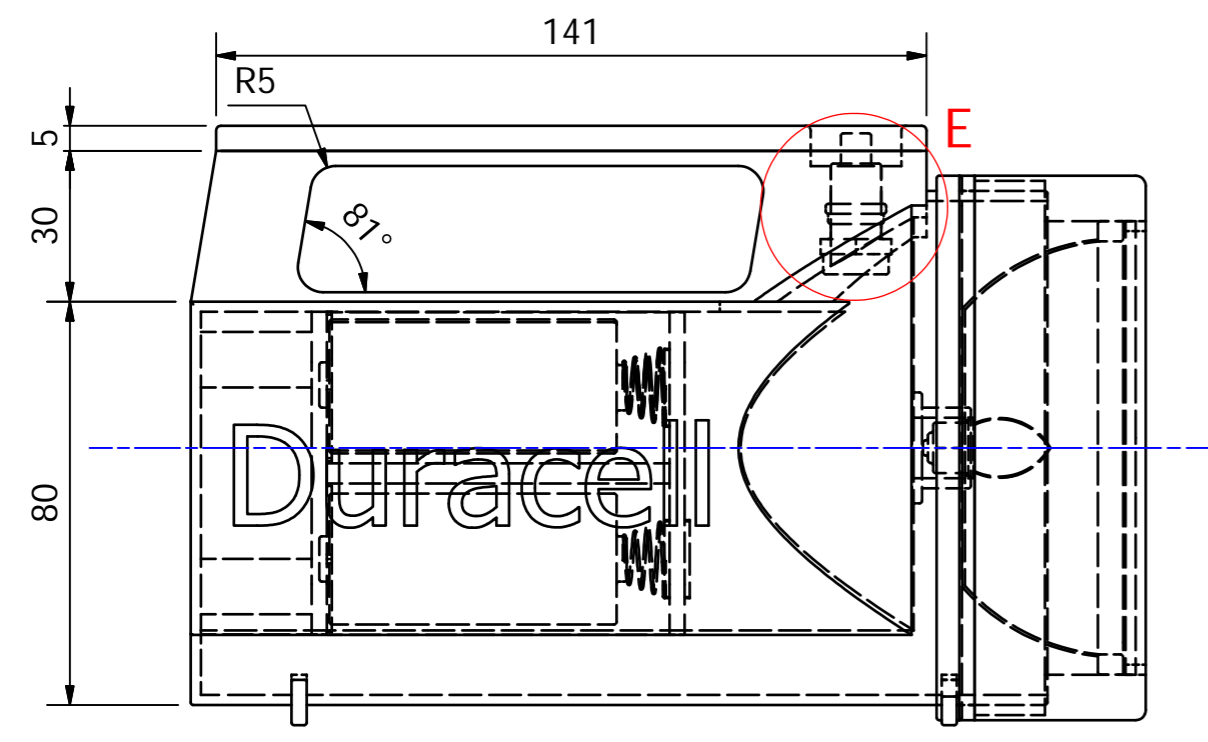
VISUAL  
TORCH POSTER



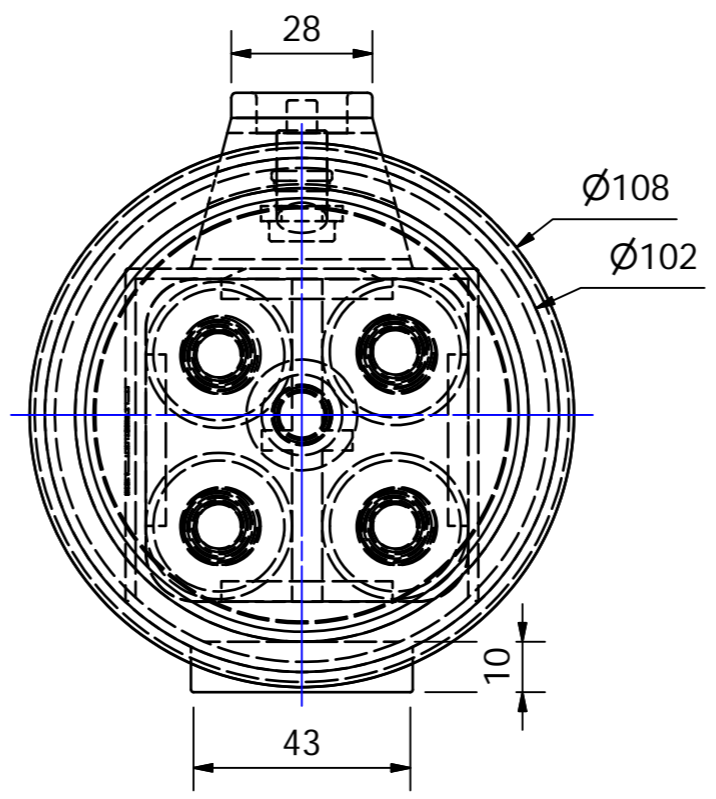
Plan



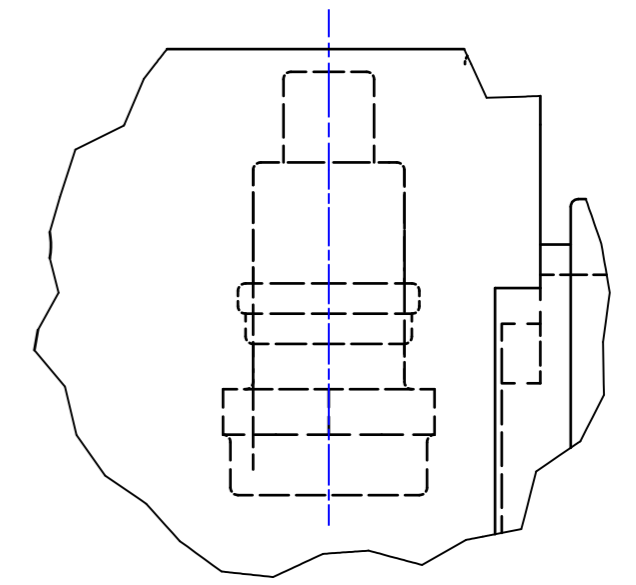
Isometric View



Elevation



End Elevation



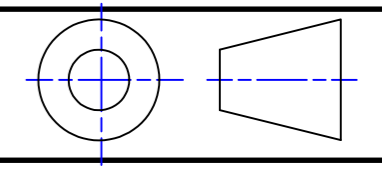
Detailed View E ( 2 : 1 )

My Name

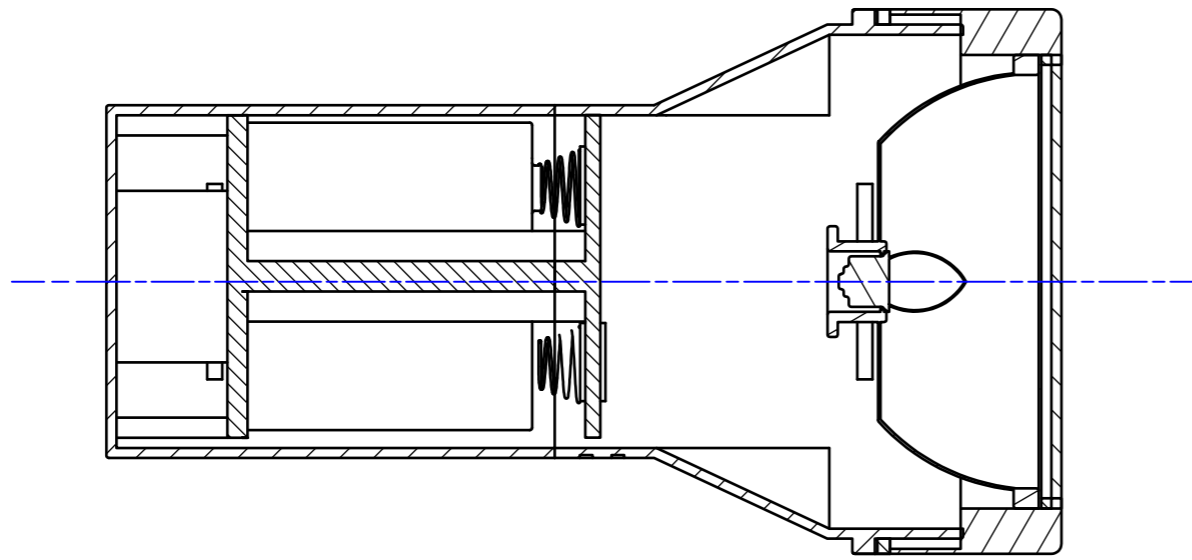
Orthographic and Isometric Views

Scale 1:2

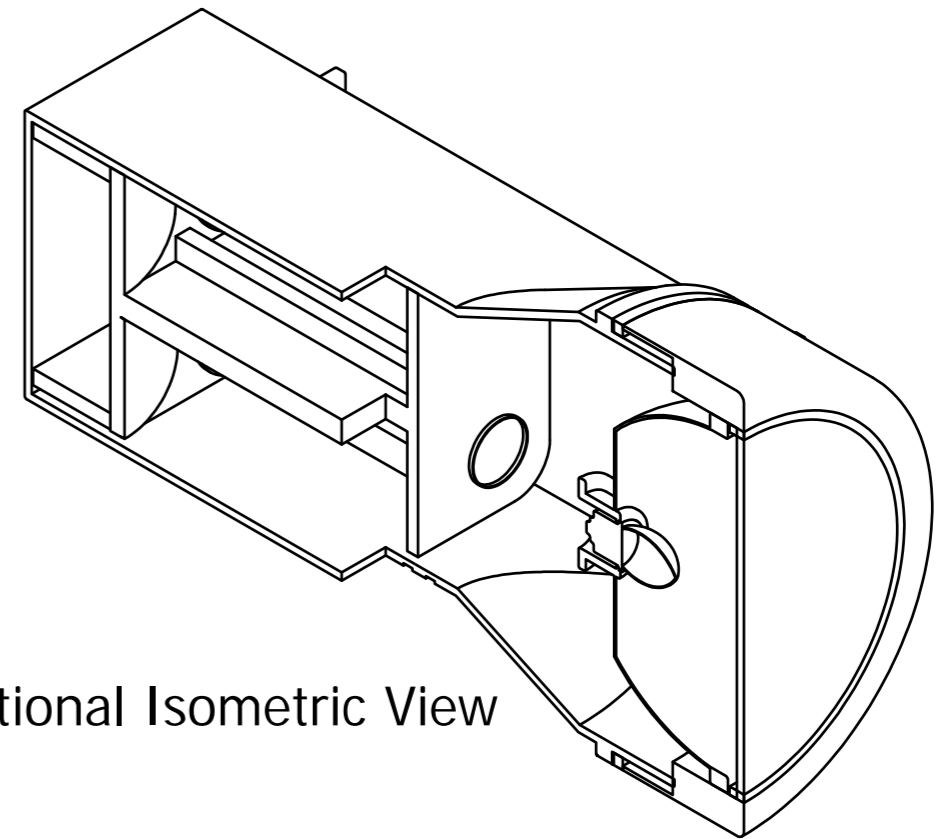
Torch



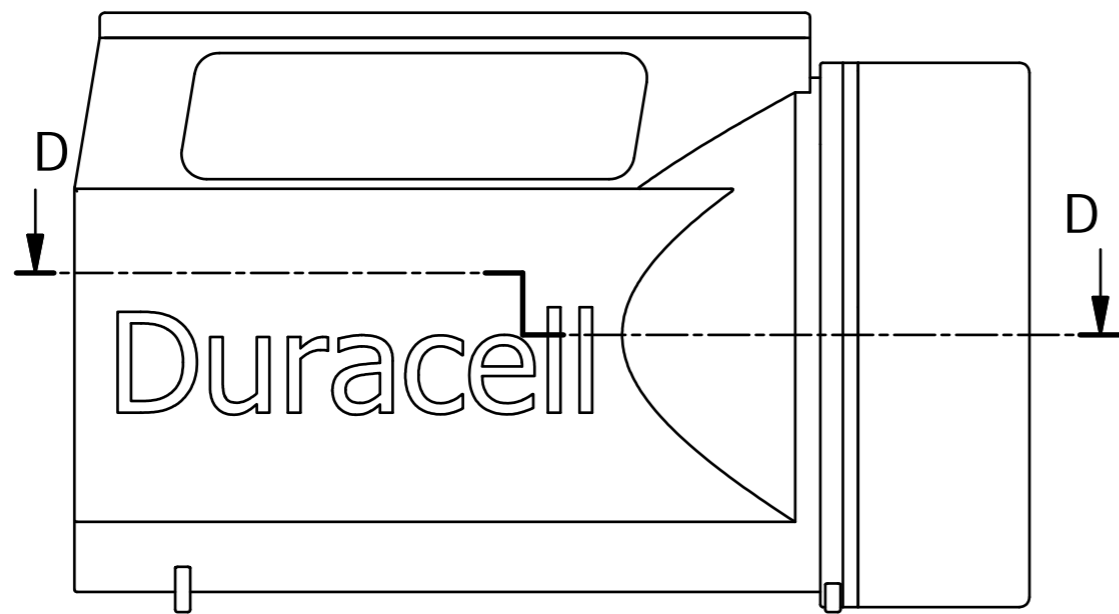




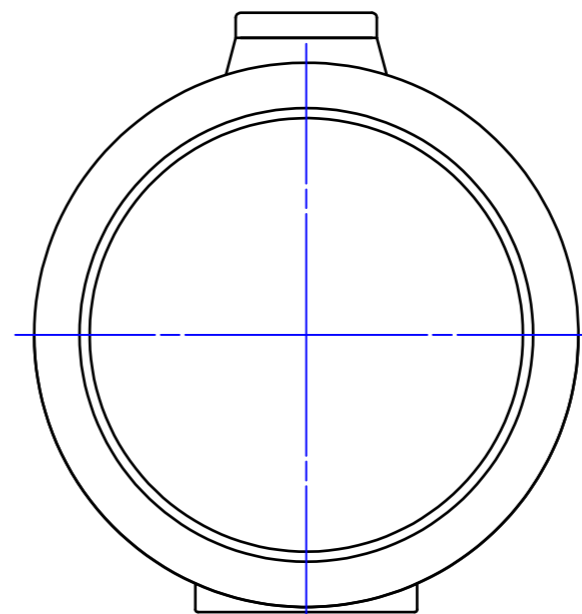
Sectional Plan D-D ( 2:3 )



Sectional Isometric View



Elevation



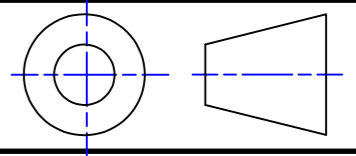
End Elevation

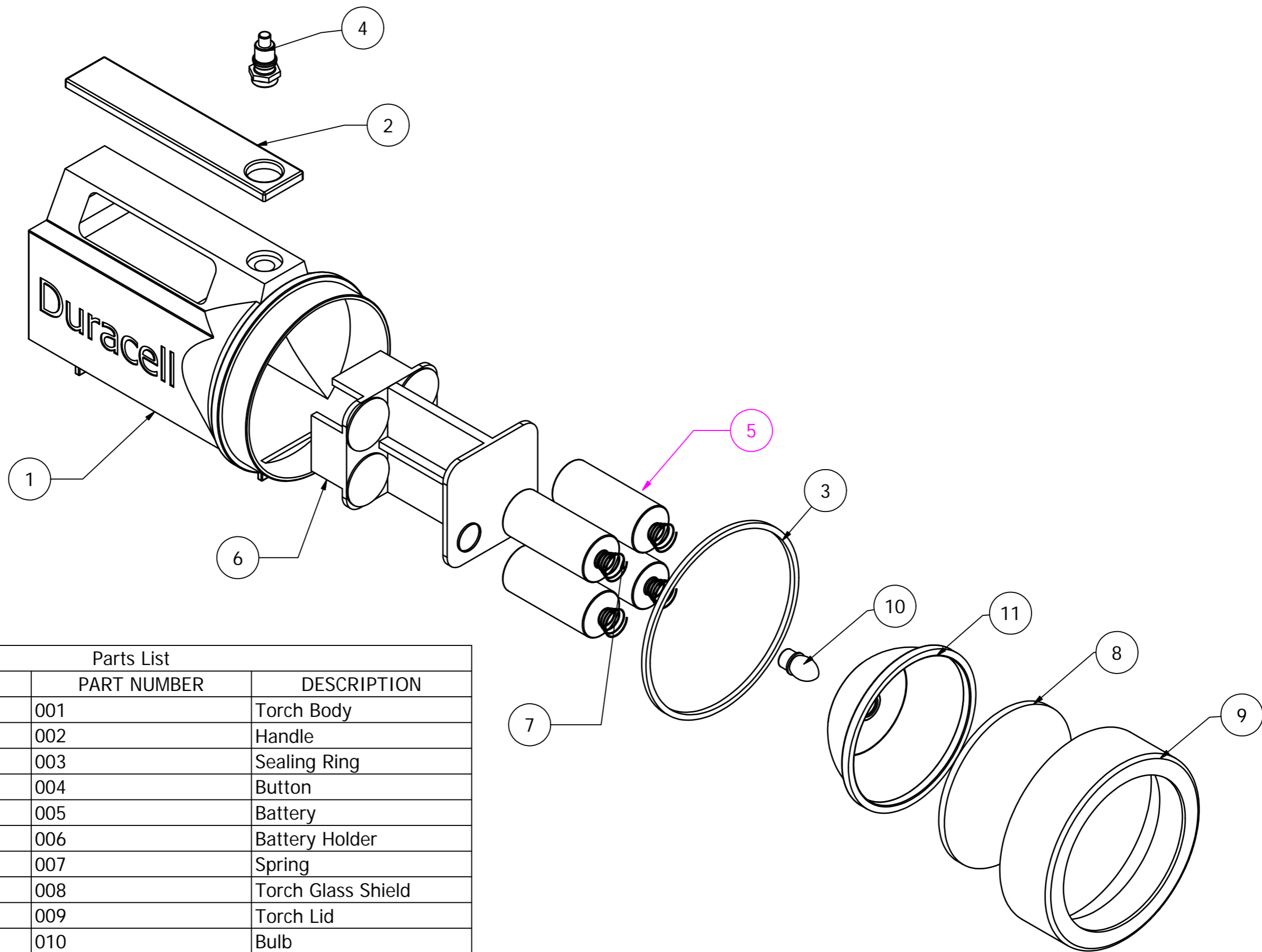
My Name

Sectional Orthographic and Isometric Views

Scale 1:2

Torch





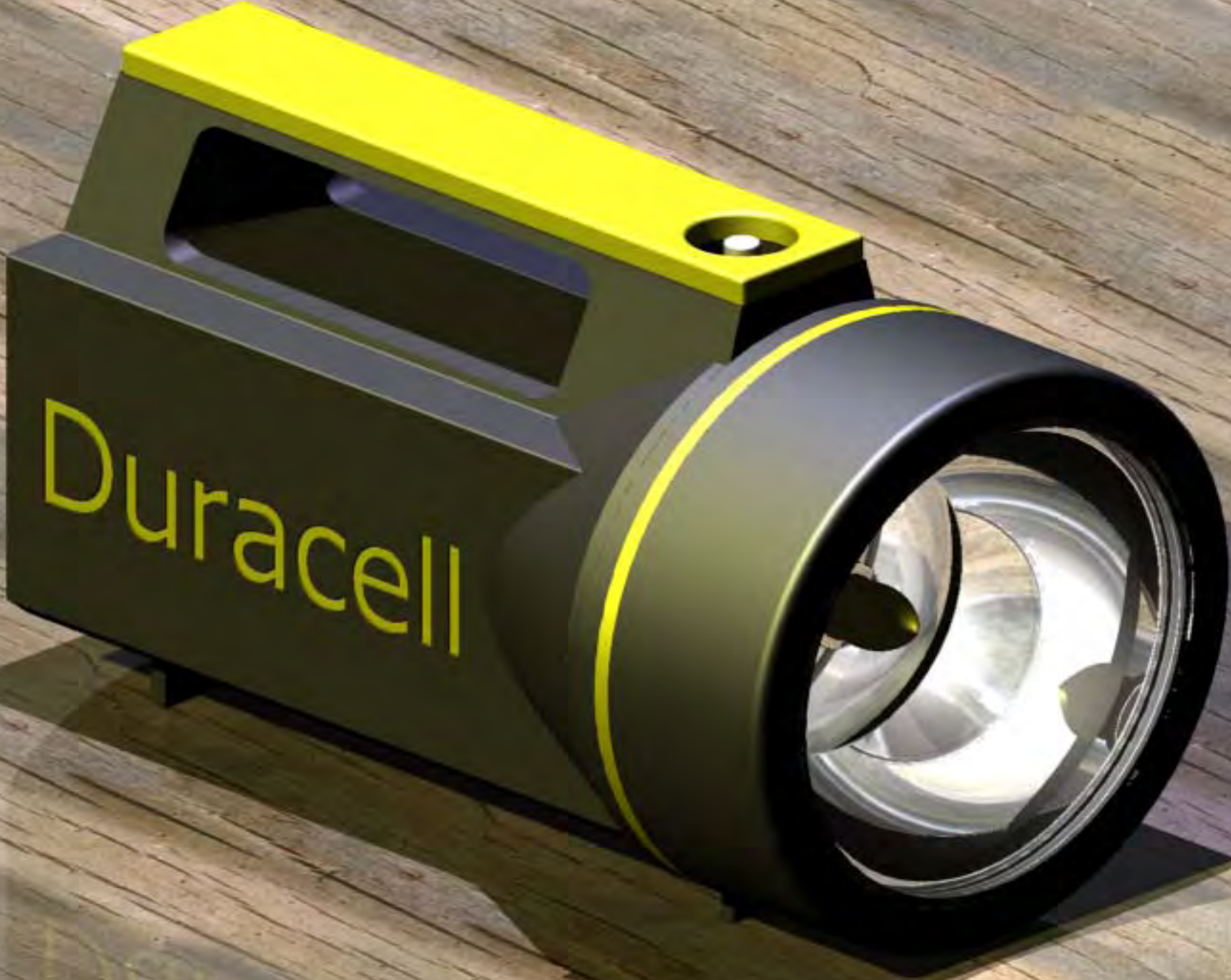
Parts List			
ITEM	QTY	PART NUMBER	DESCRIPTION
1	1	001	Torch Body
2	1	002	Handle
3	1	003	Sealing Ring
4	1	004	Button
5	4	005	Battery
6	1	006	Battery Holder
7	4	007	Spring
8	1	008	Torch Glass Shield
9	1	009	Torch Lid
10	1	010	Bulb
11	1	011	Reflector

My Name

Exploded Isometric View

Scale 1:2

Torch



Duracell



**DURACELL**



# TORCH



Duracell Torches have long been recognised for their reliability and very high quality. And when powered by Duracell Batteries they stay ULTRA bright for even longer! 'Nothing can really compare with this torch in price and performance.

**Definitely worth buying !'**

A dive torch can be an integral part of your diving experience. If you're diving at night or in an environment with very little natural light a dive torch is required. You need a torch to maintain your visibility underwater as well as signal others when you or another diver is in need of help. But, there are many types of dive torches. Some are better than others.

As mentioned, if you're going to be diving in environments without the benefit of natural light, a dive torch will be

critical to how rewarding your dive is as well as your overall safety. When night diving, your visibility underwater approaches zero, even in your immediate surroundings.

**Secondly**, even on dives during the day, a dive torch can be useful. You'll often want to investigate areas where the sunlight doesn't



reach. For example, crevices, small caves and large natural overhangs can provide unique sights. Because the light from above often can't reach these places, a dive torch can be helpful in seeing these marvels more easily. Also, when you're diving in dark areas, it may be difficult to see your depth gauge and dive computer.

£4.99



**D**uracell torches have long been recognized for their reliability and very high quality. And when powered by Duracell batteries they stay ultra bright for even longer. The range goes from big Durabeam Diving Torch to tiny key torches, as well as LED head torches, car strobe safety lamps, and Duracell Daylite torches. Not only are Daylite torches rugged, they have a white smooth light.

'Nothing can really compare with this torch in price and performance.

Build quality is brilliant, will withstand anything you can throw at it. Beam brightness and range is more than you can ask for from a torch this size - even on the flood setting.

**Definitely worth buying.**

# D I V E T O R C H



# DURACELL DIVE TORCH

This is a sturdy dive light with a pistol grip. The main body of the torch is made from tough, non-corroding ABS and polycarbonate plastic construction. The lens is surrounded by a thick rubber overmold to provide drop protection.

Behind the lens there are two bulbs a 30 watt bulb and a 14 watt bulb so that you can alter the brightness and also providing redundancy if one bulb pops you switch to the other one, this is achieved through the dual action switch that is on the underside of the torch and this is lockable to prevent accidental switching on.

The power can be provided by either 8 disposable alkaline D-cells which provide a burn time of 8-10 hours or to save the pennies a rechargeable NiCad pack which provides about 3 hours of burn time however it does take about 16 hours to fully charge from flat.

This is a very good torch which provides a clear yellowish light and

I have used it in such places as the Clyde and Stoney Cove on a bad day and it has never failed me. I like the fact that there is a locking switch to prevent accidental operation as dive lights burn so brightly they cannot be operated for any length of time on the surface however I still take the extra precaution of turning the battery around while on dry land.

A dive torch can be an integral part of



your diving experience. If you're diving at night or in an environment with very little natural light a dive torch is required. You need a torch to maintain your visibility underwater as well as signal others when you or another diver is in need of help. But, there are many types of dive torches. Some are better than others.

As mentioned, if you're going to be diving in environments without the benefit of natural light, a dive torch will be critical to how rewarding your dive is as well as your overall safety. When night diving, your visibility underwater approaches zero, even in your immediate surroundings.

**Second**, even on dives during the day, a dive torch can be useful. You'll often want to investigate areas where the sunlight doesn't reach. For example, crevices, small caves and large natural overhangs can provide unique sights. Because the light from above often can't reach these places, a dive torch can be helpful in seeing these marvels more easily. Also, when you're diving in dark areas, it may be difficult to see your depth gauge and dive computer.